

The  
**GRINCH**  
Dr. Seuss



# SLUSHY MAKER

Make your heart grow three sizes with every icy slushy sip!

SDA2899GE



## READING AND STORING THE USER MANUAL



**BEFORE USING THIS PRODUCT, PLEASE READ THROUGH THIS MANUAL CAREFULLY PAYING PARTICULAR ATTENTION TO THE SAFETY INSTRUCTIONS. FAILURE TO DO SO MAY RESULT IN PERSONAL INJURY OR DAMAGE TO THE PRODUCT.**

**CAREFULLY SAVE THIS INSTRUCTION MANUAL FOR FUTURE REFERENCE. ENSURE THE USER MANUAL IS INCLUDED WHEN PASSING THE PRODUCT ON TO ANY THIRD PARTIES.**

## **IMPORTANT SAFETY INSTRUCTIONS FOR PROPER USE**

**WHEN USING ELECTRICAL APPLIANCES, BASIC SAFETY PRECAUTIONS SHOULD ALWAYS BE FOLLOWED. ONLY USE THE PRODUCT AS DESCRIBED IN THIS USER MANUAL. ANY OTHER USE IS CONSIDERED IMPROPER AND MAY RESULT IN DAMAGE TO PROPERTY OR PERSONS.**

**THE MANUFACTURER OR VENDOR CANNOT BE HELD LIABLE FOR DAMAGES OR INJURY INCURRED THROUGH IMPROPER OR INCORRECT USE.**

- **READ AND FAMILIARISE YOURSELF WITH ALL OPERATING INSTRUCTIONS BEFORE USING THIS SLUSHY MAKER.**
- **BEFORE PLUGGING YOUR UNIT INTO THE MAINS, VISUALLY CHECK THAT THE UNIT IS INTACT AND HAS NOT SUFFERED ANY TRANSIT DAMAGE.**
- **DO NOT USE THIS SLUSHY MAKER WITH AN EXTENSION CABLE.**
- **CHECK THAT THE VOLTAGE INDICATED ON THE DATA PLATE CORRESPONDS WITH THAT OF THE LOCAL NETWORK BEFORE CONNECTING THE APPLIANCE TO THE MAINS POWER SUPPLY.**
- **CLOSE SUPERVISION IS REQUIRED WHEN USING THIS APPLIANCE NEAR CHILDREN.**
- **NEVER LEAVE THIS APPLIANCE WITHIN REACH OF CHILDREN.**
- **THIS APPLIANCE SHALL NOT BE USED BY CHILDREN.**
- **KEEP THE APPLIANCE AND ITS CORD OUT OF REACH OF CHILDREN.**
- **APPLIANCES CAN BE USED BY PERSONS WITH REDUCED PHYSICAL, SENSORY OR MENTAL CAPABILITIES OR LACK OF EXPERIENCE AND KNOWLEDGE IF THEY HAVE GIVEN SUPERVISION OR INSTRUCTION CONCERNING USE OF THE APPLIANCE IN A SAFE WAY AND UNDERSTAND THE HAZARDS INVOLVED.**
- **CHILDREN SHALL NOT PLAY WITH THE APPLIANCE.**
- **CHILDREN LESS THAN 3 YEARS SHOULD BE KEPT AWAY UNLESS CONTINUOUSLY SUPERVISED.**
- **DO NOT IMMERSE THE APPLIANCE OR ITS CORD IN WATER OR ANY OTHER LIQUIDS.**
- **DO NOT LEAVE THE APPLIANCE UNATTENDED DURING USE.**
- **DO NOT LEAVE THE APPLIANCE UNATTENDED WHILST CONNECTED TO THE MAINS**



TM & © 2025 Dr. Seuss Enterprises, L.P. All rights reserved.

## **SUPPLY.**

- **ALWAYS USE THIS APPLIANCE ON A SOLID, LEVEL, NON-FLAMMABLE SURFACE.**
- **DO NOT USE THIS APPLIANCE OUTDOORS.**
- **IT IS IMPERATIVE TO UNPLUG THE POWER CORD AFTER THE APPLIANCE HAS BEEN USED, BEFORE IT IS CLEANED AND WHILST BEING REPAIRED.**
- **REPAIRS TO ELECTRICAL APPLIANCES SHOULD ONLY BE PERFORMED BY QUALIFIED PERSONNEL. IMPROPER REPAIRS MAY PLACE USER AT SERIOUS RISK.**
- **DO NOT OPERATE THIS APPLIANCE WITH A DAMAGED PLUG OR CORD, AFTER A MALFUNCTION OR AFTER BEING DROPPED OR DAMAGED IN ANY WAY.**
- **REGULAR, PERIODIC CHECKS SHOULD BE CARRIED OUT ON THE POWER CORD TO ENSURE NO DAMAGE IS EVIDENT. SHOULD THERE BE ANY SIGNS OF DAMAGE THE APPLIANCE SHOULD NOT BE USED.**
- **IF THE POWER CORD IS DAMAGED, IT SHOULD ONLY BE REPLACED BY THE MANUFACTURER OR A SUITABLE QUALIFIED AFTER-SALES-SERVICE IN ORDER TO AVOID A HAZARD.**
- **DO NOT ALLOW THE POWER CORD TO HANG OVER SHARP EDGES OR COME IN CONTACT WITH HOT SURFACES.**
- **ALLOW THE UNIT TO COOL BEFORE STORAGE.**
- **ALWAYS DISCONNECT THE BLENDER FROM THE SUPPLY IF IT IS LEFT UNATTENDED AND BEFORE ASSEMBLING, DISASSEMBLING OR CLEANING.**
- **THIS APPLIANCE IS INTENDED FOR HOUSEHOLD USE ONLY AND SHOULD NOT BE USED FOR INDUSTRIAL PURPOSES.**
- **DO NOT USE ANY ACCESSORIES OR ATTACHMENTS WITH THIS APPLIANCE OTHER THAN THOSE SUPPLIED OR RECOMMENDED BY THE SUPPLIER.**
- **DO NOT USE THIS APPLIANCE FOR ANYTHING OTHER THAN ITS INTENDED USE.**
- **DO NOT PUSH OBJECTS INTO ANY OPENINGS AS DAMAGE TO THE APPLIANCE AND/OR ELECTRIC SHOCK MAY OCCUR.**
- **SWITCH OFF THE APPLIANCE AND DISCONNECT FROM THE SUPPLY BEFORE CHANGING ACCESSORIES OR APPROACHING PARTS THAT MOVE IN USE.**
- **GRASP THE PLUG, NOT THE CORD.**
- **DO NOT TOUCH THE BLADES WHILST THE BLENDER IS CONNECTED TO THE MAINS.**
- **WASH THE BLADES IN WARM SOAPY WATER, RINSE AND DRY THOROUGHLY.**



- **CAUTION:** THE BLADES ON THIS SLUSHY MAKER ARE VERY SHARP; EXTREME CAUTION SHOULD BE TAKEN WHEN CLEANING.

### **ADDITIONAL SAFETY INFORMATION**

- **PLEASE NOTE:** BEFORE USE, ENSURE THAT THE SLUSHY MAKER IS USED IN AN OPEN, WELL VENTILATED AREA WELL AWAY FROM OTHER APPLIANCES AND OTHER OBSTRUCTIONS.
- **DO NOT USE THE SLUSHY MAKER IN FRONT OF, NEAR OR BELOW COMBUSTIBLE MATERIALS SUCH AS PLASTICS, CURTAINS OR CUPBOARDS, ETC.**
- **LEAVE AT LEAST 10CM MINIMUM FREE SPACE BETWEEN THE APPLIANCE AND ANY OTHER SURFACES.**
- **DO NOT PLACE ANYTHING ON TOP OF THE APPLIANCE.**

## **EXPLANATION OF SYMBOLS**

THE FOLLOWING WARNING SYMBOLS OR WORDS ARE USED IN THIS INSTRUCTION MANUAL:



PRODUCTS LABELLED WITH UK CONFORMITY ASSESSMENT IDENTIFIES PRODUCTS CONFORMING TO UK STATUTORY REQUIREMENTS.



PRODUCTS LABELLED WITH THIS SYMBOL CONFORM TO APPLICABLE PROVISIONS OF THE EUROPEAN ECONOMIC AREA.



THIS CLASS 2 SYMBOL INDICATES THAT THE PRODUCT IS ELECTRICALLY DOUBLE INSULATED AND DOES NOT REQUIRE AN EARTH CONNECTION.



YOU SHOULD NOW RECYCLE YOUR WASTE ELECTRICAL GOODS AND IN DOING SO HELP THE ENVIRONMENT. THIS SYMBOL MEANS WASTE ELECTRICAL PRODUCTS AT THE END OF THEIR USEFUL LIFE SHOULD NOT BE DISPOSED OF WITH NORMAL HOUSEHOLD WASTE. PLEASE ENSURE IT IS TAKEN TO A SUITABLE FACILITY FOR DISPOSAL. CHECK WITH YOUR LOCAL AUTHORITY OR RETAILER FOR RECYCLING ADVICE OR VISIT [WWW.RECYCLE-MORE.CO.UK](http://WWW.RECYCLE-MORE.CO.UK) OR [WWW.WEEEIRELAND.IE](http://WWW.WEEEIRELAND.IE) TO FIND YOUR NEAREST RECYCLING POINT.



THIS DESIGNATES A HAZARD WITH MODERATE RISK, WHICH MAY RESULT IN SEVERE INJURY IF NOT ADHERED TO.



THIS SYMBOL PROVIDES USEFUL ADDITIONAL INFORMATION ON THE USE OF THIS PRODUCT.



THIS SYMBOL INDICATES THAT THE SUPPLY USES AN ALTERNATING CURRENT MAINS SUPPLY.

## DESCRIPTION OF PARTS



### **BEFORE USING YOUR SLUSHY MAKER**

- REMOVE ALL PACKING MATERIALS AND DISCARD RESPONSIBLY.
- CHECK THAT ALL PARTS ARE PRESENT – SEE **DESCRIPTION OF PARTS** ABOVE.
- BEFORE USING THE SLUSHY MAKER FOR THE FIRST TIME, IT IS RECOMMENDED TO WASH ALL PARTS EXCEPT THE HOUSING UNIT (1) IN WARM SOAPY WATER, RINSE AND DRY THOROUGHLY.
- NEVER IMMERSE THE HOUSING UNIT (1) IN WATER OR OTHER LIQUIDS.

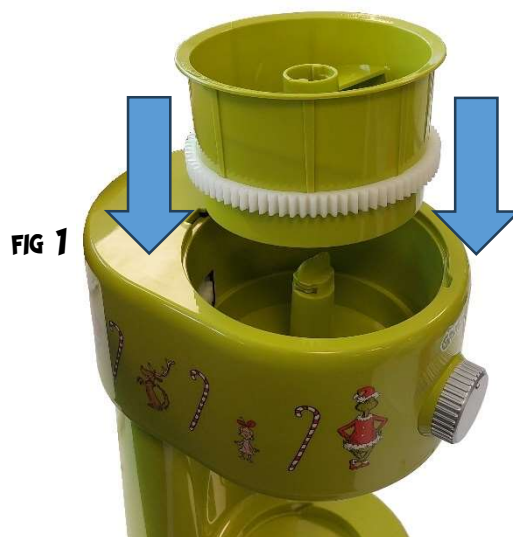
**CAUTION:** THE BLADE INSIDE THE HOUSING UNIT (1) IS NOT REMOVABLE AND IS VERY SHARP; EXTREME CAUTION SHOULD BE TAKEN WHILST CLEANING THE INSIDE OF THE SLUSHY MAKER.

### **SAFETY LOCK SYSTEM**

THIS APPLIANCE IS EQUIPPED WITH A SAFETY LOCK SYSTEM WHICH WILL PREVENT THE MOTOR STARTING WITHOUT CORRECT INSTALLATION OF THE LID (6).

**CAUTION:** DO NOT CONNECT TO THE MAINS SUPPLY UNTIL THE SLUSHY MAKER IS FULLY ASSEMBLED.

- PLACE THE SLUSHY MACHINE (1) ON A SOLID, LEVEL, NON-FLAMMABLE SURFACE.
- INSERT THE ICE FUNNEL (4) INTO THE HOUSING UNIT. (SEE FIG 1).



- ONCE THE ICE FUNNEL (4) IS FULLY INSERTED INTO THE SLUSHY MACHINE (1). ROTATE THE CENTRE SPINDLE ANTICLOCKWISE UNTIL YOU HEAR A CLICK. (SEE FIG 2)



- **INSERT THE STIRRER (5) INTO THE JUG (2). ENSURE THAT THE STIRRER IS CORRECTLY POSITIONED OVER THE SPINDLE IN THE BASE OF THE JUG (SEE FIG 3).**

- **NOW YOU CAN ADD ANY OF YOUR FAVOURITE SLUSHIE FLAVOURINGS.**

**i** **THE JUG (2) HAS A MARKING GUIDE FOR REFERENCE ONLY.**

fig 3



- **CAREFULLY INSERT THE JUG (2) INTO THE SLUSHIE MACHINE (1), ALIGNING THE NARROW PART OF THE BASE WITH THE CUT OUT IN THE SLUSHIE MACHINE (1) BASE.**
- **ONCE THE JUG (2) IS FULLY INSERTED AND CLEAR OF THE CUT OUT IN THE BASE, GENTLY ROTATE THE JUG (2) CLOCKWISE UNTIL THE HANDLE TOUCHES THE SLUSHIE MACHINE (1) MAIN BODY (SEE FIG 4)**



FIG 4

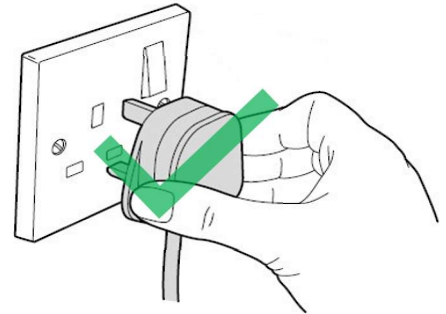
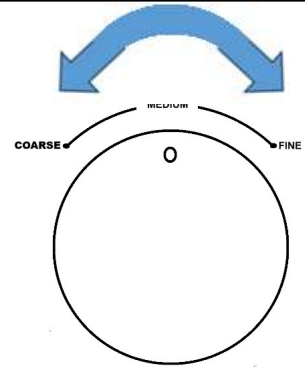
- **NOW ADD ICE TO THE ICE FUNNEL (4) ENSURING THE ICE DOES NOT EXCEED THE MAX LEVEL MARK ON THE ICE FUNNEL (4).**

- **PLACE THE LID (6) ONTO THE SLUSHIE MACHINE (5) ALIGNING THE LARGE NOTCH WITH THE BIGGER HOLE AND THE SMALL NOTCH WITH THE SMALLER HOLE.**

**i** **THE LID HAS AN ACTIVATOR TO TRIGGER THE SAFETY LOCK SYSTEM AND MUST BE FITTED AND LOCKED CORRECTLY INTO PLACE INTO FOR THE SLUSHIE MAKER TO START.**



- **YOU CAN NOW ADJUST THE COARSENESS OF THE ICE CHIPS IN YOUR FINISHED SLUSHIE ACCORDING TO YOUR PERSONAL PREFERENCE.**
- **TO SELECT ONE OF THE 3 OPTIONS, ROTATE THE SELECTION DIAL (3). CHOOSE FROM COARSE, MEDIUM OR FINE.**
- **WITH DRY HANDS, INSERT THE MAINS PLUG INTO THE NEAREST SOCKET AND SWITCH THE SOCKET ON (IF APPLICABLE)**



- **TO START THE SLUSHIE MAKER, ROTATE THE LID CLOCKWISE. THE STIRRER (5) AND ICE FUNNEL (4) WILL BEGIN TO ROTATE AUTOMATICALLY AND THE MACHINE WILL BEGIN TO SLICE THROUGH YOUR ICE.**



- **ONCE THE ICE HAS ALL BEEN TURNED INTO SLUSH, YOU CAN EITHER ADD MORE ICE OR REMOVE THE JUG AND SERVE.**
- **AFTER USE REMOVE THE MAINS PLUG.**

### **CLEANING AND MAINTENANCE OF YOUR SLUSHY MAKER**

**ALWAYS DISCONNECT THE SLUSHY MAKER FROM THE MAINS POWER SUPPLY BEFORE CLEANING.**

**WASH THE JUG, ICE FUNNEL AND STIRRER ATTACHMENT IN WARM SOAPY WATER ONLY.**

**CLEAN THE OUTSIDE OF THE HOUSING UNIT WITH A CLEAN DAMP CLOTH. NEVER CLEAN WITH HARSH OR ABRASIVE CLEANERS.**

**DO NOT SUBMERGE THE HOUSING UNIT IN WATER OR ANY OTHER LIQUIDS.**

**⚠ WARNING! THE BLADE INSIDE THE SLUSHY MAKER IS NOT REMOVABLE AND IS VERY SHARP; EXTREME CAUTION SHOULD BE TAKEN WHILST CLEANING THE INSIDE OF THE SLUSHY MACHINE.**



TM & © 2025 Dr. Seuss Enterprises, L.P. All rights reserved.

## TROUBLESHOOTING GUIDE

<b>PROBLEM</b>	<b>POSSIBLE CAUSE</b>	<b>POSSIBLE FIX</b>
<b>THE UNIT IS NOT OPERATING</b>	<b>NO POWER TO THE UNIT</b>	<b>ENSURE THE MAINS PLUG IS INSERTED AND THE SOCKET ON (IF APPLICABLE)</b>
	<b>THE UNIT IS ASSEMBLED INCORRECTLY</b>	<b>CHECK THAT THE UNIT IS ASSEMBLED CORRECTLY SO THAT THE SAFETY LOCK SYSTEM IS ACTIVATED</b>
<b>UNIT STOPS RUNNING DURING USE</b>	<b>THE LID MAY HAVE COME LOOSE DURING USE.</b>	<b>ENSURE THE LID IS CORRECTLY FITTED.</b>
<b>MOTOR IS RUNNING BUT THE UNIT IS NOT CREATING SLUSH.</b>	<b>ICE FUNNEL IS NOT INSTALLED CORRECTLY.</b>	<b>ENSURE THE ICE FUNNEL IS INSTALLED CORRECTLY.</b>
<b>ICE IS NOT DESIRED CONSISTENCY</b>	<b>INCORRECT SELECTION DIAL POSITION.</b>	<b>CHANGE THE POSITION OF THE SELECTION DIAL TO INCREASE OR DECREASE COARSENESS.</b>

## TECHNICAL SPECIFICATION

<b>MODEL NUMBER</b>	<b>SDA2899</b>
<b>RATED VOLTAGE</b>	<b>220-240V~ 50/60Hz</b>
<b>RATED POWER</b>	<b>25W</b>
<b>CAPACITY – BLENDER</b>	<b>1100ML</b>
<b>PROTECTION CLASS</b>	<b>II</b>
<b>POWER CONSUMPTION OF EQUIPMENT IN OFF MODE SHALL NOT EXCEED 0.30W</b>	<b>NO STANDBY MODE 0.00W</b>
<b>THIS EQUIPMENT COMPLIES WITH ANNEX III OF THE COMMISSION REGULATION (EU) 2023/826</b>	

## NON-REWIREABLE MAINS PLUG

IF YOUR APPLIANCE IS SUPPLIED WITH A NON-REWIREABLE PLUG FITTED TO THE MAINS LEAD AND SHOULD THE FUSE NEED REPLACING, YOU MUST USE AN ASTA APPROVED ONE (CONFORMING TO BS 1362 OF THE SAME RATING). IF IN DOUBT, CONSULT A QUALIFIED ELECTRICIAN. NEVER USE A MAINS PLUG WITH THE FUSE COVER MISSING.

IF YOU NEED TO REMOVE THE PLUG – **DISCONNECT FROM THE MAINS** – AND THEN CUT IT OFF THE MAINS LEAD AND IMMEDIATELY DISPOSE OF IT SAFELY. NEVER ATTEMPT TO REUSE THE PLUG OR INSERT IT INTO A SOCKET OUTLET AS THERE IS A DANGER OF ELECTRIC SHOCK.

## DISPOSAL OF THE PACKAGING

DISPOSE OF PAPER AND CARDBOARD IN APPROPRIATE PAPER RE-CYCLING FACILITIES.

DISPOSE OF RECYCLABLE PLASTICS IN APPROPRIATE PLASTIC RE-CYCLING FACILITIES.

DISPOSE OF NON-RECYCLABLE PLASTICS IN THE APPROPRIATE PLASTICS COLLECTION SERVICE.

## DISPOSAL OF THE PRODUCT



YOU SHOULD NOW RECYCLE YOUR WASTE ELECTRICAL GOODS AND IN DOING SO HELP THE ENVIRONMENT. THIS SYMBOL MEANS WASTE ELECTRICAL PRODUCTS AT THE END OF THEIR USEFUL LIFE SHOULD NOT BE DISPOSED OF WITH NORMAL HOUSEHOLD WASTE. PLEASE ENSURE IT IS TAKEN TO A SUITABLE FACILITY FOR DISPOSAL. CHECK WITH YOUR LOCAL AUTHORITY OR RETAILER FOR RECYCLING ADVICE OR VISIT [WWW.RECYCLE-MORE.CO.UK](http://WWW.RECYCLE-MORE.CO.UK) OR [WWW.WEEEIRELAND.IE](http://WWW.WEEEIRELAND.IE). TO FIND YOUR NEAREST RECYCLING POINT.



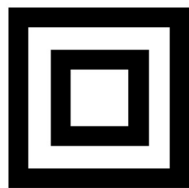
### CUSTOMER SUPPORT

SHOULD YOU REQUIRE ANY PRODUCT INFORMATION, REPLACEMENT PARTS OR ACCESSORIES, PLEASE CONTACT OUR CUSTOMER CARE TEAM ON **0161 831 7879 (8.30AM-4.30PM MONDAY TO THURSDAY, 8.00AM-4.00PM FRIDAY)** AND SELECT OPTION **3** OR BY CONTACTING US VIA EMAIL **THEGRINCH@ESGLTD.COM**

- REPLACEMENT PARTS AND ACCESSORIES ARE GUARANTEED FOR **1 YEAR** FROM THE DATE OF PURCHASE.
- IT IS IMPORTANT TO NOTE THAT YOUR WARRANTY BECOMES INVALID SHOULD NON GRINCH PARTS OR ACCESSORIES BE USED WITH THIS APPLIANCE.



UK  
CA



# WARRANTY

*Thank you for purchasing your Grinch product.*

*As part of our commitment to quality, we are offering you an extra 2 years warranty in addition to your 1 year guarantee*

Your Grinch product is guaranteed for 1 year from the date of original purchase, with proof of purchase or receipt. If any defect should occur due to faulty workmanship or material, your faulty product should be returned to the place of purchase, replacement or refund is at the discretion of the retailer.

The guarantee is subject to the following provisions:

- The product must be correctly installed and operated in accordance with the requirements contained in the instruction manual.
- The product must be used solely for domestic purposes.
- It does not cover general wear and tear, damage, misuse or any consumable parts.
- The guarantee will be rendered invalid if the product is re-sold or has been damaged through inexpert repair.
- The guarantee is only valid within the UK and Eire.

Your standard 1 year guarantee will only be extended to the maximum available for your individual product upon registration. (Note: products must be registered individually and covers the main body and housing). If you do not register your product within 28 days of the original purchase date, your product will only be guaranteed for 1 year.

*To validate your extended 2 year warranty \* please email the model number and your receipt to :*

**thegrinch@esg ltd.com**

*\*Your extended warranty is only valid with proof of purchase receipt and subject to the conditions outlined above.*

TM & © 2025 Dr. Seuss Enterprises, L.P. All rights reserved.

Produced and imported under licence by Euro Group Ltd.

Brightgate House, 1 Brightgate Way, Manchester, M32 0TB, UK.

EU Rep: EuroSonic Magpie (ESM) Ltd. D05 X006, Ireland.

Made in China