



POWER BLEND PRO 1200W BLENDER

Easily slices through tough ingredients



READING AND STORING THE USER MANUAL



Before using this product, please read through this manual carefully paying particular attention to the safety instructions. Failure to do so may result in personal injury or damage to the product.

Carefully save this instruction manual for future reference. Ensure the user manual is included when passing the product on to any third parties.

IMPORTANT SAFETY INSTRUCTIONS FOR PROPER USE

When using electrical appliances, safety precautions should always be followed.

Only use the product as described in this user manual. Any other use is considered improper and may result in damage to property or persons.

The manufacturer or vendor cannot be held liable for damages or injury incurred through improper or incorrect use.

- **Read and familiarise yourself with all operating instructions before using this Jug Blender.**
- Before plugging your unit into the mains supply, visually check that it is intact and has not suffered any transit damage.
- **DO NOT** use this product with a programmer, timer, separate remote-control system or any other device.
- Check that the voltage indicated on the data plate corresponds with that of the local network before connecting the appliance to the mains power supply.
- **DO NOT** immerse this appliance in water or any other liquids.
- Close supervision is required when using this appliance near children.
- Never leave this appliance within reach of children.
- This appliance shall not be used by children.
- Keep the appliance and its cable out of the reach of

children.

- Appliances can be used by persons with reduced physical, sensory or mental capabilities or lack of experience and knowledge if they have been given supervision or instruction concerning use of the appliance in a safe way and understand the hazards involved.
- Children shall not play with the appliance.
- Cleaning and user maintenance shall not be made by children.
- **DO NOT** leave the appliance unattended during use.
- **DO NOT** leave the appliance unattended whilst connected to the mains supply.
- Always use this appliance on a solid, level, non-flammable surface.
- Protect the unit from moisture whilst using this appliance outdoors.
- Repairs to electrical appliances should only be performed by qualified personnel. Improper repairs may place user at serious risk.
- It is imperative to unplug the mains cable after the appliance has been used, before it is cleaned and whilst being repaired.
- Regular, periodic checks should be carried out on the mains cable to ensure no damage is evident. Should there be any signs of damage the appliance should not be used.
- **DO NOT** operate this appliance with a damaged plug or mains cable, after a malfunction or after being dropped or damaged in any way.
- **DO NOT** allow the mains cable to hang over sharp edges or come in contact with hot surfaces.
- **DO NOT** allow the mains cable to hang over sharp edges or come in contact with hot surfaces.

-
- **DO NOT** use this appliance for anything other than its intended use.
 - **DO NOT** push objects into any openings as damage to the appliance and/or electric shock may occur.
 - This appliance is intended for household use only and should not be used for industrial or commercial purposes.
 - Switch off the appliance and disconnect from the mains supply before changing accessories or approaching parts that move in use.
 - Grasp the plug, not the cord.
 - **DO NOT** touch the blades whilst the Blender is connected to the mains.
 - Wash the blades in warm soapy water, rinse and dry thoroughly.

⚠ WARNING! The blades on this blender are very sharp; extreme caution should be taken when cleaning.

Explanation of Symbols

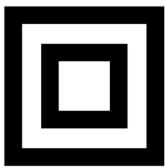
The following warning symbols or words are used in this instruction manual:



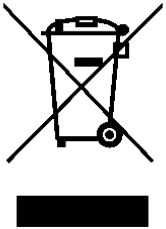
Products labelled with UK Conformity Assessment identifies products conforming to UK statutory requirements.



Products labelled with this symbol conform to applicable provisions of the European Economic Area.



This Class 2 symbol indicates that the product is electrically double insulated and does not require an earth connection.



You should now recycle your waste electrical goods and in doing so help the environment. This symbol means waste electrical products at the end of their useful life should not be disposed of with normal household waste and not sent to landfill. Please ensure it is taken to a suitable facility for disposal. Check with your Local Authority or retailer for recycling advice or visit www.recycle-more.co.uk or www.weeireland.ie, enter your postcode to find out your nearest recycling site.



This symbol provides useful additional information on the use of this product.



WARNING! This designates a hazard with moderate risk, which may result in severe injury if not adhered to.

Description of Parts

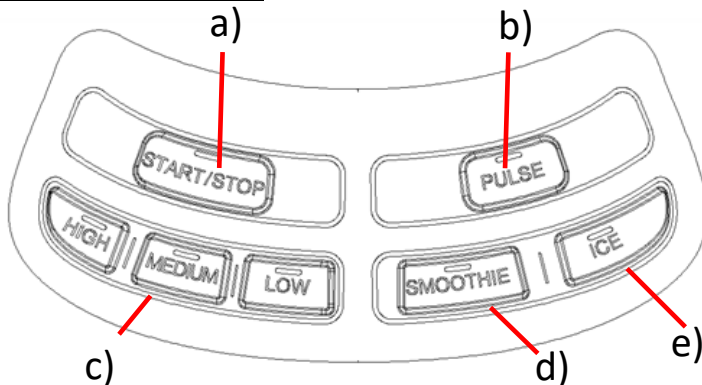


1. Measuring Cup
2. Lid
3. Jug Handle
4. Jug
5. Blending Blade



6. Control Panel
7. Base Unit

Control Panel (6)



- a) Start/Stop Button
- b) Pulse Button
- c) Speed Control
(High/Medium/Low)
- d) Smoothie Button
- e) Ice Button

Using Your Blender

1 Filling Your Blender Jug with Ingredients



Select your chosen ingredients. Place the **Jug (4)** on a flat surface. Carefully add the ingredients into the **Jug (4)**. For larger pieces, chop into smaller pieces before placing into the jug.

i Ensure that the **Jug (4)** is not filled above the 'MAX' mark.

2 Attaching the Jug to the base unit

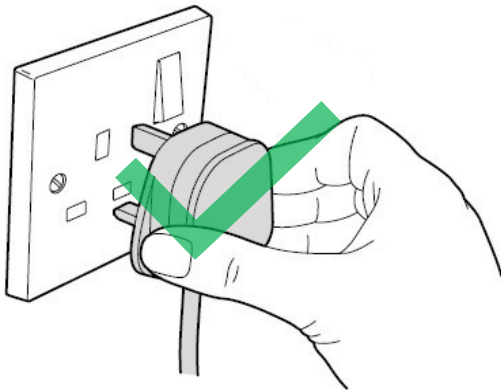


Place the **Jug (4)** onto the **Base Unit (7)**. Aligning the 2 markings (one on the **Jug (4)** and one on the **Base Unit (7)**) and screw the **Jug (4)** clockwise until the jug is securely fastened to the Base Unit (7).

i Note: The Blender will not work unless the jug is correctly attached to the Base Unit (7).

⚠ WARNING! Do NOT attempt to start the blender without the lid and measuring cup in place.

3 Operating the blender



Insert the Mains Plug into the nearest socket (ensuring hands are dry)

- To begin blending, press the **Start/Stop Button** (a) and then the **Pulse Button** (b) for controlled blending.
- For continuous blending, use the **Speed Control** (c) High, Medium and Low buttons. Ideally, start blending using the **Pulse Button** (b) and switch to **Speed Control** (c) if necessary, depending on your required consistency.
- If you wish to add further ingredients during blending, switch off the blender by pressing the **Start/Stop Button** (a) and remove the mains plug.
- Hold the **Base Unit** (7) and rotate the **Jug** (4) using the **Jug Handle** (3) anticlockwise. Lift the **Jug** (4) upwards off the **Base Unit** (7).
- Remove the **Lid** (2) carefully before adding more ingredients. Smaller ingredients or liquids can also be added by removing or using the **Measuring Cup** (1).
- Once all the ingredients are blended, press the **Start/Stop Button** (a) and remove the mains plug.

4 Smoothie/Ice Control

- For Smoothie mode, once the blender is switched on (see “**Operating the blender**” for details) press the Smoothie Button. The indicator will illuminate, and the Blender will start. The appliance will automatically stop once the preset mode has finished and the light will blink 3 times before switch off (60 Seconds).
- For Ice mode, once the blender is switched on, press the Ice button and the indicator light will illuminate and blender will automatically run for 60 seconds before switching off.

i Add a little water when blending fruit and vegetables.

Removing the Measuring Cup



To remove the **Measuring Cup (1)** in the centre of the **Lid (2)** rotate the cup anticlockwise. This will allow you to add further ingredients. Always replace the **Measuring Cup (1)** before use.

i Ensure the ingredients do not exceed the 1.85L (max) mark on the **Jug (4)**.

Care and Maintenance

- Always disconnect the Jug Blender from the mains power supply before cleaning.
- Remove the **Jug (4)** and wash in warm soapy water, rinse and dry thoroughly.
- Do not immerse the **Base Unit (7)** in water or any other liquids.
- Do not use harsh or abrasive cleaners.
- Not Dishwasher safe, do not clean any part of your Jug Blender in a dishwasher. Hand wash only.

⚠ WARNING! The blades on this Jug Blender are not removable from the inside of the jug and are very sharp; extreme caution should be taken when cleaning the inside of the jug.

⚠ WARNING! DO NOT use the blender to process hot foods or liquids.

⚠ WARNING! To prevent the blender from overheating, dry ingredients must NOT be processed for more than 30 seconds at a time.

If the blender overheats a thermal switch will activate and shut off the motor. To reset, unplug the appliance and allow it to cool for 30 minutes before using again.

⚠ WARNING! DO NOT attempt to remove the blade assembly for clean

Troubleshooting

<i>Problem</i>	<i>Possible Reason and Solution</i>
Motor doesn't start	Ensure the tabs on the jug are correctly located in base unit and the jug is turned fully clockwise
	The mains plug is not inserted into the socket or the socket is not switched on (if applicable)
Food is chopped unevenly.	The jug may be overfilled - reduce the amount of ingredients below the 'Max' fill mark
	The ingredients may be stuck, - remove and shake the jug to redistribute contents
Food is too finely chopped or watery.	The food has been over processed, for best results use short pulses
	Not enough ingredients and/or too much liquid
Cannot achieve 'snow' from ice cubes.	For best result use ice straight from the freezer. Try using short blends instead of long one and a little water
Jug is leaking.	Make sure the lid (as applicable) is properly attached to the jug
Doesn't blend well	Pulse ingredients for best results, for frozen foods, blend in 2 second intervals. Cut ingredients up prior to blending
jug assembly will not properly align to the base unit	Set the cup on a level surface. Place the jug on top of the base and align the marks. Twist clockwise so that the jug assembly evenly aligns to the base unit.

Recipe Ideas – Smoothies

Your blender is perfect for making refreshing smoothies, the 1.85L capacity provides ample volume for multiple servings. Please see the following smoothie recipe ideas for you to try.

Fruit Smoothie

Ingredients

250g Red Grapes
200g Strawberries
120g Banana (peeled)
150g Ice Cubes

Method

1. Place all ingredients into the Glass Jug in the order listed above and secure the lid.
2. Start the blender on its lowest speed and then gradually increase to its highest speed.
3. Blend for 1 minute, or until desired consistency is reached. If required add a little water to mix to provide a more liquid consistency.
4. Serve immediately.

Fruit Salad Smoothie

Ingredients

50g Green Grapes
85g Orange (peeled)
50g Pineapple (peeled)
25g Cucumber (peeled)
1/2 Carrot (peeled and chopped)
20g Apple
150g Ice Cubes

Method

1. Place all ingredients into the Jug in the order listed above and secure the lid.
2. Start the blender on its lowest speed and then gradually increase to its highest speed.
3. Blend for 1 minute and 30 seconds, or until desired consistency is reached. If required add a little water to mix to provide a more liquid consistency.
4. Serve immediately.

Peanut Butter Berry Smoothie

Ingredients

150ml Milk

1 Banana (peeled)
30g Peanut Butter
180g Raspberries
75g Ice Cubes

Method

1. Place all ingredients into the Jug in the order listed above and secure the lid.
2. Start the blender on its lowest speed and then gradually increase to its highest speed.
3. Blend for 1 minute, or until desired consistency is reached. If required add a little water to mix to provide a more liquid consistency.
4. Serve immediately

Technical Specification

Model No.	SDA2784
Voltage	220-240V~ 50-60Hz
Power	1200W
Capacity	1.85L
Class	II
Power consumption of equipment in Off Mode shall not exceed 0,50W	0,25 W
This Equipment complies with Annex III of the Commission Regulation (EU) 2023/826	

Non-Rewireable Mains Plug

If your appliance is supplied with a non-rewireable plug fitted to the mains lead and should the fuse need replacing, you must use an ASTA approved one (conforming to BS 1362 of the same rating). If in doubt, consult a qualified electrician. Never use a mains plug with the fuse cover missing.

If you need to remove the plug – **DISCONNECT FROM THE MAINS** – and then cut it off the mains lead and immediately dispose of it safely. Never attempt to reuse the plug or insert it into a socket outlet as there is a danger of electric shock.

Customer Support

Should you require any product information, replacement parts or accessories, please contact our customer care team on 0161 831 7879 (8.30am-4.30pm Monday to Thursday, 8.00am-4.00pm Friday) and select option 3 or by contacting us via email: help@daewooelectricals.com.

- Replacement parts and accessories are guaranteed for 1 year from the date of purchase.
- It is important to note that your warranty becomes invalid should non Daewoo parts or accessories be used with this appliance.

Recycling Information

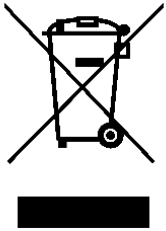
Disposal of the Packaging

Dispose of paper and cardboard in appropriate paper re-cycling facilities.

Dispose of recyclable plastics in appropriate plastic re-cycling facilities.

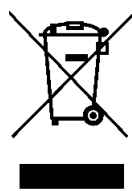
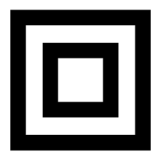
Dispose of non-recyclable plastics in the appropriate plastics collection service.

Disposal of the Product



You should now recycle your waste electrical goods and in doing so help the environment. This symbol means waste electrical products at the end of their useful life should not be disposed of with normal household waste and not sent to landfill. Please ensure it is taken to a suitable facility for disposal. Check with your Local Authority or retailer for recycling advice or visit www.recycle-more.co.uk or www.weeireland.ie, enter your postcode to find out your nearest recycling site.

**UK
CA**





DAEWOO®

WARRANTY

Thank you for purchasing your Daewoo product.

As part of our commitment to quality, we are offering you an extra 2 years warranty in addition to your 1 year guarantee

Your Daewoo product is guaranteed for 1 year from the date of original purchase, with proof of purchase or receipt. If any defect should occur due to faulty workmanship or material, your faulty product should be returned to the place of purchase, replacement or refund is at the discretion of the retailer.

The guarantee is subject to the following provisions:

- The product must be correctly installed and operated in accordance with the requirements contained in the instruction manual.
- The product must be used solely for domestic purposes.
- It does not cover general wear and tear, damage, misuse or any consumable parts.
- The guarantee will be rendered invalid if the product is re-sold or has been damaged through inexpert repair.
- The guarantee is only valid within the UK and Eire.

Your standard 1 year guarantee will only be extended to the maximum available for your individual product upon registration. (Note: products must be registered individually and covers the main body and housing). If you do not register your product within 28 days of the original purchase date, your product will only be guaranteed for 1 year.

To validate your extended 2 year warranty please register your purchase online within 28 days of the original purchase date by registering at*

<https://help.daewooelectricals.com>

or

[Contact Us \(daewooelectricals.com\)](https://www.daewooelectricals.com)

*Your extended warranty is only valid with proof of purchase receipt and subject to the conditions outlined above.

Daewoo is a registered trademark.
Produced and imported under licence by
ESG Ltd. Manchester M3 1JS UK
EU Rep: EuroSonic Magpie (ESM) Ltd. Ireland D05 X006
www.esgltd.com