



*Please refer to the warranty section for terms of your extended guarantee



SINGLE INDUCTION HOB

READING AND STORING THE USER MANUAL



Before using this product, please read through this manual carefully paying particular attention to the safety instructions. Failure to do so may result in personal injury or damage to the product.

IMPORTANT SAFETY INSTRUCTIONS FOR PROPER USE

When using electrical appliances, basic safety precautions should always be followed.

Only use the product as described in this user manual. Any other use is considered improper and may result in damage to property or persons.

The manufacturer or vendor cannot be held liable for damages or injury incurred through improper or incorrect use.

- **Read and familiarise yourself with all operating instructions before using this Induction Hob.**
- Before plugging your unit into the mains, visually check that it is intact and has not suffered any transit damage.
- Check that the voltage indicated on the data plate corresponds with that of the local network before connecting the appliance to the mains power supply.
- **DO NOT** use this product with a programmer, timer, separate remote-control system or any other such device.
- **DO NOT** immerse this appliance in water or any other liquids.
- Cooking appliances should be positioned in a stable situation with the handles (if applicable) positioned to avoid spillage of liquids.
- **DO NOT** touch hot surfaces. Accessible surfaces are liable to get during use.
- Oven gloves should be used whilst using the Induction Hob.
- Close supervision is required when using this appliance near children.
- Never leave this appliance within reach of children.



- This appliance can be used by children aged from 8 years and above and persons with reduced physical, sensory and mental capabilities or lack of experience or knowledge if they have been given supervision or instruction concerning use if the appliance in a safe way and understand the hazards involved.
- Children shall not play with the appliance.
- Keep the appliance and its cord out of reach of children aged less than 8 years.
- Cleaning and user maintenance shall not be made by children unless they are older than 8 and supervised.
- **DO NOT** leave the appliance unattended during use.
- **DO NOT** leave the appliance unattended whilst connected to the mains supply.
- Always use this appliance on a solid, level, non-flammable surface.
- **DO NOT** use this appliance outdoors.
- It is imperative to unplug the power cord after the appliance has been used, before it is cleaned and whilst being repaired.
- Regular, periodic checks should be carried out on the mains cable to ensure no damage is evident. Should there be any signs of damage the appliance should not be used.
- If the power cable is damaged, it should only be replaced by suitable qualified personnel in order to avoid a hazard.
- **DO NOT** operate this appliance with a damaged plug or cord, after a malfunction or after being dropped or damaged in any way.
- **DO NOT** allow the mains cable to hang over sharp edges or come in contact with hot surfaces.
- Allow the unit to cool before storage.
- Never place the appliance near to flammable material or high pressure containers.
- This appliance is intended for household use only and

should not be used for industrial purposes.

- **DO NOT** use any accessories or attachments with this appliance other than those supplied or recommended by supplier.
- **DO NOT** immerse the appliance, base or its cord in water or any other liquids.
- **DO NOT** use this appliance for anything other than its intended use.
- **DO NOT** push objects into any openings as damage to the appliance and/or electric shock may occur.
- Ensure appliance is situated in an open area, do not allow it to come in contact with or place beneath cupboards, curtains, wall coverings, clothing or other flammable materials.
- Unplug after each use. Grasp the plug, not the cord.
- **DO NOT** cover this appliance.
- Never place this appliance on an electric, gas, or any other type of hob.
- Repairs to electrical appliances should only be performed by qualified personnel. Improper repairs may place user at serious risk.
- **DO NOT** run the mains cable under carpets, rugs, etc.
- Metallic objects such as knives, forks, spoons and lids should not be placed on the hob surface.
- **DO NOT** place or leave any magnetic objects (e.g. credit cards, memory cards) or electronic devices (e.g. computers, mobile phones, MP3 players) near the appliance, as they may be affected by its electromagnetic field.

⚠ WARNING!

- This appliance complies with electromagnetic safety standards.
- Persons with cardiac pacemakers or other electrical implants must consult their doctor before using this appliance to ensure the implants will not be affected by the electromagnetic field.
- Failure to follow this advice could be fatal or seriously injure the user.

THIS APPLIANCE MUST BE EARTHED

Explanation of Symbols

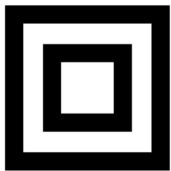
The following warning symbols or words are used in this instruction manual:



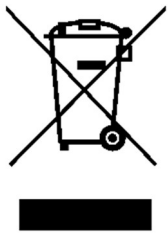
Products labelled with UK Conformity Assessment identifies products conforming to UK statutory requirements.



Products labelled with this symbol conform to applicable provisions of the European Economic Area.



This Class 2 symbol indicates that the product is electrically double insulated and does not require an earth connection.



You should now recycle your waste electrical goods and in doing so help the environment. This symbol means waste electrical products at the end of their useful life should not be disposed of with normal household waste and not sent to landfill. Please ensure it is taken to a suitable facility for disposal. Check with your Local Authority or retailer for recycling advice or visit www.recycle-more.co.uk or www.weeeireland.ie, enter your postcode to find out your nearest recycling site.



This designates a hazard with moderate risk, which may result in severe injury if not adhered to.



This symbol provides useful additional information on the use of this product.



This symbol indicates that the supply uses an alternating current mains supply.



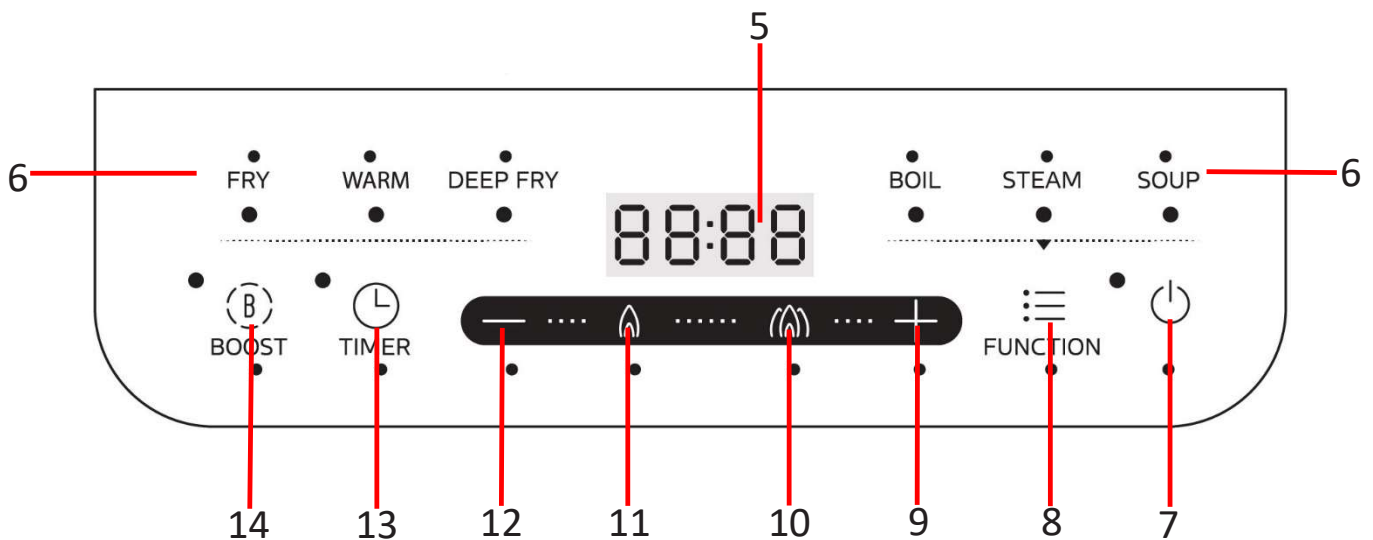
This symbol indicates that the surface is gets hot and care must be taken.

Description of Parts



1. Crystal Glass Cooking Surface
2. Control Panel
3. Cooling Fan Inlet (underneath)
4. Cooling Fan Outlet

Control Panel



5. LED Display
6. Cooking Presets
7. Power Icon
8. Function Icon
9. + Icon
10. High Power Icon

11. Low Power Icon
12. - Icon
13. Timer Icon
14. Boost Icon

Before the First Use of Your Induction Hob

- Remove all packing materials and discard responsibly.
- Ensure all parts are present see **Description of Parts** above.
- Check that there is no damage to the mains cable or product.
- Ensure that you clean your Induction Hob before first and every use.

Suitable Kitchenware

A pan of minimum 16cm in diameter is recommended for best results when using this Induction Hob. Smaller pans are not recommended as sufficient contact with the element may not be made. Ensure larger pans do not protrude beyond the edge of the Induction Hob or obscure the **Control Panel (2)**.

As induction cooking uses magnetic fields to heat the pan/vessel, only certain pans can be used, below are some examples of suitable and non-suitable kitchenware for this Induction Hob.

Types of Pots & Pans suitable for use with an Induction Hob (Inductive Base)

Steel.

Cast Iron.

Enamelled Iron.

Induction Compatible Stainless-Steel Pans.

Pots & Pans should be flat bottomed, with a minimum diameter of 16cm.



Types of Pots & Pans NOT suitable for use with an Induction Hob (Non-Inductive Base)

Heat resistant glass.

Ceramic.

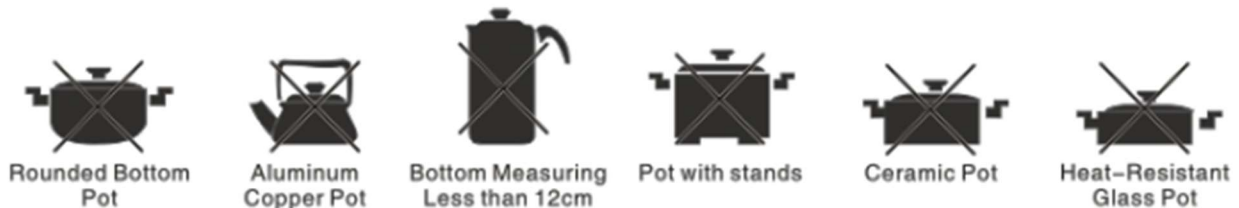
Copper.

Aluminium.

Do not use rounded bottomed pots and pans.

Do not use pots and pans with stands or legs.

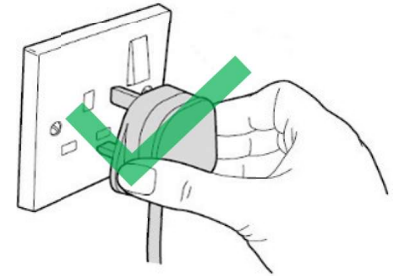
Do not use pots and pans with a diameter of less than 16cm.



i Always check the suitability of the pan in the manufacturers care and use instructions supplied with the pan.

Setting up Your Induction Hob

1. Place the Induction Hob on a solid, level, heat resistant surface clear of all obstructions.
2. Insert the mains plug into the nearest socket,
3. **The digital display will illuminate and indicate -L- (low temperature) if the plate temperature is below 70°C. If the plate is higher than 70°C, the digital display will show -H-. to indicate that the plate is hot.**
4. Touch the **Power Icon** (7) to power up the unit, the LED to the left of the icon will flash.*
5. Touch the **Function Icon** (8) to select the desired **Cooking Pre-Set** (6). The LED under the chosen **Cooking Preset** (6) will illuminate.
Use the table below to help select the desired cooking preset:
*If the hob is not touched within 10 seconds the unit will beep and power off.



Cooking Pre-Sets (6)

Preset	Power Setting	Adjustable Power?	Timer (13)
Fry	Default 1800W.	Yes 120-2200W. High/Low Power modes are enabled.	Timer can be set manually up to 3 hours
Warm	Fixed at 120W.	Non-Adjustable.	2 Hour Timer* automatically enabled.
Deep Fry	Default 1200W.	Yes 120-2200W. High/Low Power modes are enabled.	Timer can be set manually up to 3 hours
Boil	Default 2200W.	Yes 120-2200W.	1 hour Timer* automatically enabled.
Steam	Default 2200W, reduces to 1400W and 1200W after 5 and 10 minutes (respectively).	Yes 120-2200W. High/Low Power modes are enabled.	1 hour Timer* automatically enabled.
Soup	Default 1600W, reduces to 1200W and 300W after 6 and 10 minutes (respectively).	Yes 120-2200W. High/Low Power modes are enabled.	2 hour Timer* automatically enabled.

*The Timer setting can be overridden to set the desired cooking time.

i The **LED Display** (5) will alternate to show the set power and the timer.

Timer (13)

Touch the **Timer Icon (13)** then touch the **+** and **-** icons (9 & 12) to set the cooking time up to 3 hours in 1 minute increments. Touching and holding the **+** and **-** icons (9 & 12) will adjust the cooking time in 10 minute increments.

Boost (14)

Touching the **Boost Icon (14)** increases the power to maximum (2200W) for 3 minutes before returning to the original settings of the chosen cooking preset. Boost mode will be shown by a line of dashes rotating clockwise around the edge of the **LED Display (5)**.

High/Low Power (10 & 11)

Touch the **High Power Icon (10)** to set the power to 1600W.

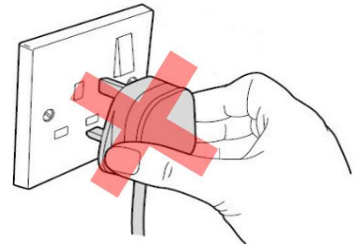
Touch the **Low Power Icon (11)** to set the power to 800W.

After use, touch the **Power Icon (7)** to power the unit down into standby.

-  Do not leave the appliance unattended whilst in use.
Do not allow pans to boil over as damage to the hob may occur.**

Cleaning and Maintenance of Your Induction Hob

- Always power off and unplug the Induction Hob from the mains supply and allow to cool before cleaning.
- **DO NOT** submerge any part of the main body or mains cable in water or any other liquids.
- Wipe clean with a soft damp cloth.
- Never clean any part of the Induction Hob with harsh or abrasive cleaners.



Troubleshooting

<i>Issue</i>	<i>Possible Cause</i>
Does not power up/turn on.	Is the mains plug inserted properly? Is there damage to the button, power outlet, fuse or power cable?
Powers up and turns on, but heating does not start.	Is the pot material suitable for the induction hob?
Heating stops during the process.	Is the temperature of the oil too high when frying dishes? Is the temperature of the surrounding environment too high? Is the air inlet/outlet blocked? Is the default heating time of the induction cooker over? The self-safety protection of the induction may have started, wait for several minutes and reconnect power.
<i>Error codes</i>	<i>Possible Cause/checking points/actions</i>
C2	Wait a moment and touch the Power On/Off Icon (7) when temperature returns to acceptable levels the hob will operate.
EH EL	Turn off, when voltage normalises, power up and the hob will operate.
E1 E2 E3 E4 E7 EU	Unit has developed a fault.

Technical Specification

Rated Voltage	220-240V~ 50/60Hz
Rated Power	2200W
Model Number	SDA2771
Protection Class	II
ErP Standby mode ≤ 1.0W with permanent display	0,81W
This Equipment complies with Annex III of the Commission Regulation (EU) 2023/826	

Non-Rewireable Mains Plug

If your appliance is supplied with a non-rewireable plug fitted to the mains lead and should the fuse need replacing, you must use an ASTA approved one (conforming to BS 1362 of the same rating). Never use a plug with the fuse cover missing. If in doubt, consult a qualified electrician.

If you need to remove the plug -**DISCONNECT FROM THE MAINS**- and then cut it off the mains lead and immediately dispose of it safely. Never attempt to reuse the plug or insert it into a socket outlet as there is a danger of electric shock.

Recycling Information

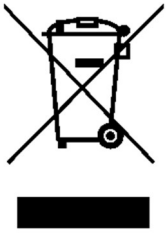
Disposal of the Packaging

Dispose of paper and cardboard in appropriate paper re-cycling facilities.

Dispose of recyclable plastics in appropriate plastic re-cycling facilities.

Dispose of non-recyclable plastics in the appropriate plastics collection service.

Disposal of the Product



You should now recycle your waste electrical goods and in doing so help the environment. This symbol means waste electrical products at the end of their useful life should not be disposed of with normal household waste and not sent to landfill. Please ensure it is taken to a suitable facility for disposal. Check with your Local Authority or retailer for recycling advice or visit www.recycle-more.co.uk or www.weeireland.ie, enter your postcode to find out your nearest recycling site.

Customer Support

Should you require any product information, replacement parts or accessories, please contact our customer care team on 0161 831 7879 (8.30am-4.30pm Monday to Thursday, 8.00am-4.00pm Friday) and select option 3 or by contacting us via email: help@daewooelectricals.com.

- Replacement parts and accessories are guaranteed for 1 year from the date of purchase.
- It is important to note that your warranty becomes invalid should non Daewoo parts or accessories be used with this appliance.

Notes





DAEWOO®

WARRANTY

Thank you for purchasing your Daewoo product.

As part of our commitment to quality, we are offering you an extra 2 years warranty in addition to your 1 year guarantee

Your Daewoo product is guaranteed for 1 year from the date of original purchase, with proof of purchase or receipt. If any defect should occur due to faulty workmanship or material, your faulty product should be returned to the place of purchase, replacement or refund is at the discretion of the retailer.

The guarantee is subject to the following provisions:

- The product must be correctly installed and operated in accordance with the requirements contained in the instruction manual.
- The product must be used solely for domestic purposes.
- It does not cover general wear and tear, damage, misuse or any consumable parts.
- The guarantee will be rendered invalid if the product is re-sold or has been damaged through inexpert repair.
- The guarantee is only valid within the UK and Eire.

Your standard 1 year guarantee will only be extended to the maximum available for your individual product upon registration. (Note: products must be registered individually and covers the main body and housing). If you do not register your product within 28 days of the original purchase date, your product will only be guaranteed for 1 year.

To validate your extended 2 year warranty please register your purchase online within 28 days of the original purchase date by registering at:*

<https://help.daewooelectricals.com>

or

[Contact Us \(daewooelectricals.com\)](https://www.daewooelectricals.com)

*Your extended warranty is only valid with proof of purchase receipt and subject to the conditions outlined above.

Daewoo is a registered trademark.
Produced and imported under license by
Eurosonic Group Limited
Brightgate House
1 Brightgate Way
Manchester M32 0TB UK
EU Rep: EuroSonic Magppie (ESM) Ltd. Ireland D05 X006
www.esgltd.com