



**DAEWOO**®



\*Please refer to the warranty section for terms of your extended guarantee



**12" ELECTRIC PIZZA OVEN**

## Contents

Page No.	
2	Contents
3	Reading and Storing the User Manual
3	Important Safety Instructions for Proper Use
6	Additional Safety Information
7	Explanation of Symbols
7	Oven cooking guide
8	Description of Parts
9	Before First Use of Your Pizza Oven
9	Description of Controls
9	Using the Pizza Oven
12	Description of Presets
12	Preset Cooking Temperatures and Times
12	Technical Specification
13	Cleaning and Maintenance
13	Plug Wiring Information
13	Recycling Information
14	Troubleshooting Guide
15	Customer Support
Back Page	Warranty Information

---

## **READING AND STORING THE USER MANUAL**



Before using this product, please read through this manual carefully paying particular attention to the safety instructions. Failure to do so may result in personal injury or damage to the product.

Carefully save this instruction manual for future reference.

Ensure the user manual is included when passing the product on to any third parties.

## **IMPORTANT SAFETY INSTRUCTIONS FOR PROPER USE**

Whilst using electrical appliances, basic safety precautions should always be followed.

Only use the product as described in this user manual. Any other use is considered improper and may result in damage to property or persons.

The manufacturer or vendor cannot be held liable for damages or injury incurred through improper or incorrect use.

- **Read and familiarize yourself with all operating instructions before using this Pizza Oven.**
- Before plugging your unit into the mains, visually check that it is intact and has not suffered any transit damage.
- Check that the voltage indicated on the data plate corresponds with that of the local network before connecting the appliance to the mains power supply.
- **DO NOT** use this product with a programmer, timer, separate remote-control system or any other such device.
- **DO NOT** immerse this appliance in water or any other liquids.
- Cooking appliances should be positioned in a stable situation with the handles (if any) positioned to avoid spillage of liquids.
- **DO NOT** touch hot surfaces. Accessible surfaces are liable to get hot during use. Always use the handles provided.



- Oven gloves should be used whilst using this appliance.
- Close supervision is required when using this appliance near children.
- Never leave this appliance within reach of children.
- This appliance shall not be used by children from 0 to 8 years.
- This appliance can be used by children aged from 8 years and above and persons with reduced physical, sensory or mental capabilities or lack of experience and knowledge if they have been given supervision or instruction concerning use of the appliance in a safe way and understand the hazards involved.
- Children shall not play with the appliance.
- Keep the appliance and its cord out of reach of children less than 8 years.
- Cleaning and user maintenance shall not be made by children.
- **DO NOT** leave the appliance unattended during use.
- **DO NOT** leave the appliance unattended whilst connected to the mains supply.
- Always use this appliance on a solid, level, non-flammable surface.
- **DO NOT** use this appliance outdoors.
- It is imperative to unplug the power cord after the appliance has been used, before it is cleaned and whilst being repaired.
- Regular, periodic checks should be carried out on the supply cord to ensure no damage is evident. Should there be any signs of damage the appliance should not be used.
- If the supply cord is damaged it is to be replaced by a qualified person in order to avoid a hazard.
- **DO NOT** operate this appliance with a damaged plug or cord, after a malfunction or after being dropped or

damaged in any way.

- **DO NOT** allow the mains cable to hang over sharp edges or come in contact with hot surfaces.
- Allow the unit to cool before storage.
- Never place the appliance near to flammable material or high-pressure containers.
- This appliance is intended for household use only and should not be used for industrial purposes.
- **DO NOT** use any accessories or attachments with this appliance other than those supplied or recommended by the supplier.
- **DO NOT** use this appliance for anything other than its intended use.
- **DO NOT** push objects into any openings as damage to the appliance and/or electric shock may occur.
- Ensure appliance is situated in an open area, do not allow it to come in contact with cupboards, curtains, wall coverings, clothing or other flammable materials.
- Unplug after each use. Grasp the plug, not the cord.
- **DO NOT** cover this appliance.
- Never place this appliance on an electric, gas, or any other type of hob.

**⚠ WARNING!** Do not attempt to move the Oven whilst it is hot or contains hot food. Turn the appliance off and disconnect from the mains and let it cool sufficiently before moving it.

**⚠ WARNING!** Hot steam may be released when opening and closing the appliance during use. Risk of scalding!

**⚠ WARNING!** Always carry the appliance with both hands. Always use oven gloves. Burn hazard!



**THIS APPLIANCE MUST BE EARTHED**

---

### **Additional Safety Information**

- **PLEASE NOTE:** Before use, ensure that the Pizza Oven is used in an open, well ventilated area well away from other appliances and other obstructions.
- Do not use the Pizza Oven in front of, near or below combustible materials such as plastics, curtains or cupboards, etc.
- Do not place the appliance against a wall or against other appliances. Leave at least 10cm minimum free space on the back and sides and 10cm minimum free space above the appliance.
- Do not place anything on top of the appliance.

### Explanation of Symbols

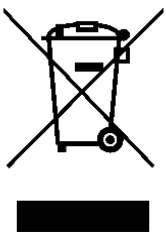
The following warning symbols or words are used in this instruction manual:



Products labelled with UK Conformity Assessment identifies products conforming to UK statutory requirements.



Products labelled with this symbol conform to applicable provisions of the European Economic Area.



You should now recycle your waste electrical goods and in doing so help the environment. This symbol means waste electrical products at the end of their useful life should not be disposed of with normal household waste and not sent to landfill. Please ensure it is taken to a suitable facility for disposal. Check with your Local Authority or retailer for recycling advice or visit [www.recycle-more.co.uk](http://www.recycle-more.co.uk) or [www.weeeireland.ie](http://www.weeeireland.ie), enter your postcode to find out your nearest recycling site.



This designates a hazard with moderate risk, which may result in severe injury if not adhered to.



This symbol provides useful additional information on the use of this product.



This symbol indicates that the supply uses an alternating current mains supply.

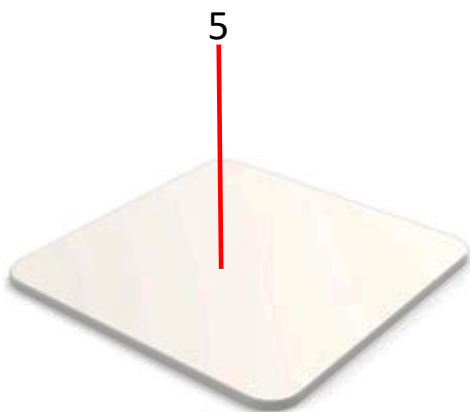


This symbol indicates that the surface is gets hot and care must be taken.

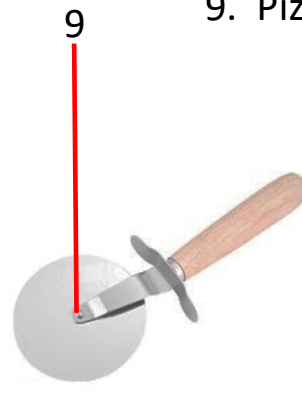
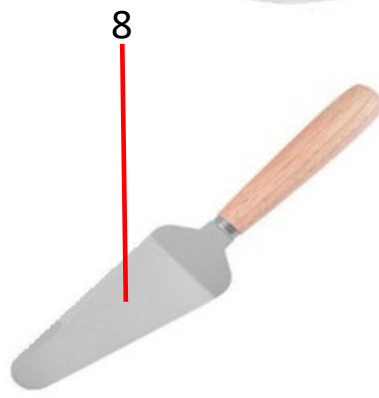
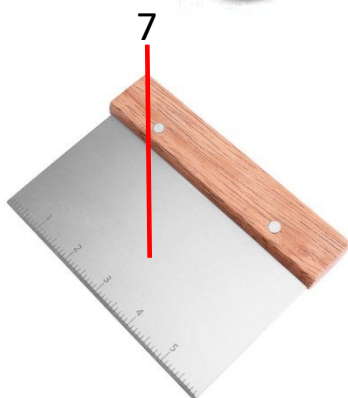
### Oven cooking guide

Cooking times may vary depending on the food ingredients and weight, adjust the time as advised in the recipe or on pack cooking guide.

### Description of Parts



1. Vents
2. Door Handle
3. Window
4. Control Panel
5. 13" Pizza Stone
6. Pizza Peel
7. Dough Cutter
8. Pizza Slice Server
9. Pizza Cutter

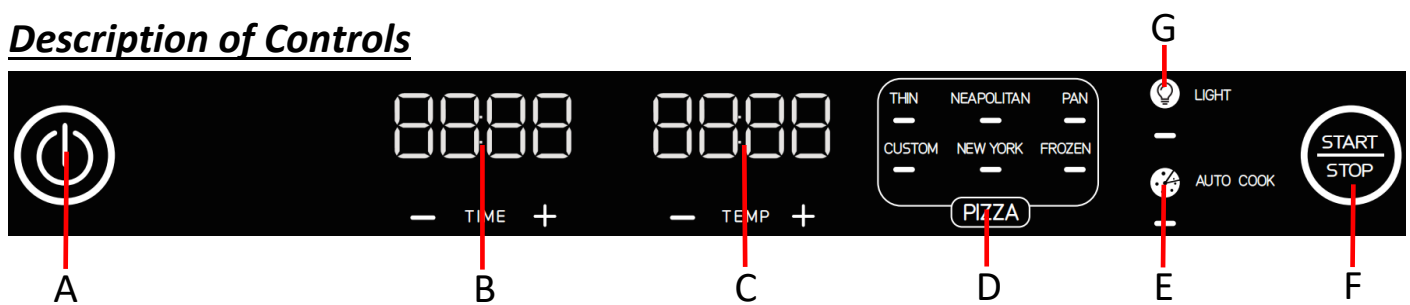


### **Before first Use of Your Pizza Oven**

- Remove all packing materials and discard responsibly.
- Ensure all parts are present - see **Description of Parts**.
- Check that there is no transit damage to the mains cable or product.
- Place the Pizza Oven on a solid, level, non-flammable surface that is strong enough to support the weight of the Pizza Oven.
- Wash all the accessories (6-9), except the **Pizza Stone** (5), in warm soapy then rinse and dry thoroughly.
- Assemble the **Pizza Peel** (6) using a suitable screwdriver and spanner (not supplied). Ensure the handle is tight and secure check screws periodically to ensure they are still tight and secure.

**i** Before the very first use, it is advised to run the appliance empty at maximum temperature for approximately 15 minutes by selecting a preset and adjusting temperature to the maximum and time to 15 minutes, this is to remove any residual lubricants placed on the elements to prevent corrosion during transit.

### **Description of Controls**



#### **Power (A)**

Once the Pizza oven has been connected to the mains, a beep will be heard and the **Power** (A) icon will flash.

Touch the **Power** icon (A) to power up the oven. The **Power** icon (A), **Time Display** (B) and **Temp Display** (C) will illuminate.

The **Pizza Preset** (D) and the **Start/Stop** icon (F) will both flash.

You can select your chosen preset Pizza Preset at this point.

#### **Time Adjustment (B)**

Touch the + and – icons to adjust the cooking time of any preset before cooking.

The cooking time will be displayed on the **Control Panel** (4) above the + and – icons.

**NB** Each touch alters the time in 1 minute intervals, constant touch activates fast advance of the time setting.

### Temperature Adjustment (C)

Touch the + and – icons to adjust the cooking temperature of any preset before cooking. The cooking temperature will be displayed on the **Control Panel (4)** above the + and – icons.

**NB** Each touch alters the temperature in 5°C intervals, constant touch activates fast advance of the temperature setting.

### Pizza Preset (D)

Touch **PIZZA** to cycle through the Pizza presets. Once your preferred type of Pizza is selected, touch the **Start/Stop** icon (F) to start cooking. See the table below describing each preset.

### Auto Cook (E)

Touch 'Auto Cook' once a Pizza Preset has been selected, a 30 minute continuous cooking program will be set for the chosen preset. This setting is best used to cook preprepared multiple Pizza's consecutively.

### Start/Stop (F)

Touch 'Start/Stop' to start cooking. Touch again to pause the cooking. This also applies during the preheat process.

### Light Button (G)

Touch 'Light' to operate the internal light to see your Pizza cooking through the **Window (3)**.

### Standby Mode

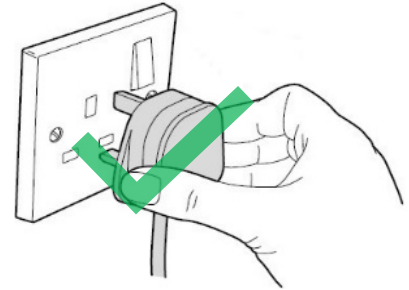
If there is no interaction for 1 minute, the Pizza Oven will enter standby mode. If a process has been paused and the control panel hasn't been interacted with for 5 minutes, the Pizza Oven will enter standby mode.

### Using the Pizza Oven

1. Place the Pizza Oven on a solid, level, heat resistant surface, ensure that the ventilation outlets are not obstructed.
2. Before use, place the **Pizza Stone (5)** inside the oven on top of rails as shown right:



3. Insert the Mains plug into the nearest socket.



4. A beep will be heard and the **Power (A)** icon will flash to show the unit is connected to the mains.

5. Touch **Power (A)** to power up the Pizza Oven.

6. Select your chosen Pizza Preset for the type of Pizza to be cooked by touching **PIZZA (D)**.

7. The Preset settings can be overridden using the **Time and Temperature Adjustment (B & C)** using the + and – icons.

8. Touch **Start/Stop (F)** to begin cooking.

**NB** Prior to cooking, the Pizza Oven will go into to 'Pre-heat' mode, the Time and Temperature displays will show 'Pre \_ \_ \_ /'.

9. After preheating, the Time and Temperature displays will show 'Add Food' and the oven will beep 10 times. At this point open the door using the **Handle (2)** and place your Pizza onto the **Pizza Stone (5)** using the **Pizza Peel (6)**. Close the door and touch the **Start/Stop** icon (F) to start cooking.

10. At the end of cooking time the oven will beep 5 times and the Time and Temperature displays will show 'End'. Remove the Pizza from the oven using the **Pizza Peel (6)**.

11. Cut the Pizza into slices using the **Pizza Cutter (9)** and serve the slices using the **Pizza Slice Server (8)**.

**⚠ WARNING!** The use of Oven gloves is recommended whilst using the Pizza Oven.

**NB** During use the **Pizza Stone (5)** will blacken – this is quite normal.

### ***Description of Pizza Presets***

<b><i>Pizza Preset</i></b>	<b><i>Description</i></b>
Thin Crust	Thin, Stretched pizza with a crispy crust.
Neapolitan	A chewy, puffy crust that is spotted with crispy bubbles.
Pan Pizza	Baked in a deep dish or pan with a thick, chewy crust. Sicilian or Chicago Deep Dish.
Custom	Set the time and temperature as your desired preference to make your own pizza.
New York	Large, hand-tossed pizza with light browning and a foldable, chewy crust.
Frozen	For simple cooking of your favourite frozen pizza, ready in minutes.

### ***Preset Cooking Temperatures and Times***

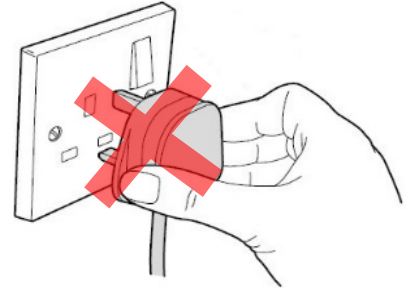
<b><i>Function</i></b>	<b><i>Default Temperature</i></b>	<b><i>Adjustable Temperature</i></b>	<b><i>Default time</i></b>	<b><i>Adjustable Time</i></b>	<b><i>Preheat</i></b>
Thin	310°C/590°F	80-400°C 180-750°F	4 min	1-10 min	Yes
Neapolitan	450°C/850°F	80-450°C 180-850°F	3 min	1-10 min	Yes
Pan	250°C/480°F	80-400°C 180-750°F	14 min	1-20 min	Yes
Custom	200°C/390°F	80-350°C 180-350°F	10 min	1-30 min	Yes
New York	285°C/550°F	80-400°C 180-750°F	6 min	1-15 min	Yes
Frozen	270°C/520°F	80-400°C 180-750°F	10 min	1-20 min	Yes

### ***Technical Specification***

Rated Voltage	220-240V~ 50-60Hz
Rated Power	1800-2200W
Model Number	SDA2763
Protection Class	I (This Appliance Must Be Earthed)
ErP: Power consumption of equipment in standby mode shall not exceed 0.50W	0.20 W
This equipment complies with Annex III of Commission Regulation (EU) 2023/826	

### Cleaning and Maintenance

- Always disconnect the Pizza Oven from the mains and allow to cool before cleaning.
- Clean the outside of the Pizza Oven with a soft damp cloth. Never clean the Pizza Oven with harsh or abrasive cleaners.
- Clean the inside of the oven with warm water and a mild detergent, clean after every use to prevent the build-up of grease and food deposits which may cause excessive smoking.
- Do not submerge any part of the Oven or its cord in water or any other liquids.
- Do Not submerge the Pizza Stone in water or any other liquid. Wipe the stone with a clean, damp cloth.



### Non-Rewireable Mains Plug

If your appliance is supplied with a non-rewireable plug fitted to the mains lead and should the fuse need replacing, you must use an ASTA approved one (conforming to BS 1362 of the same rating). If in doubt, consult a qualified electrician. Never use a plug with the fuse cover missing.

If you need to remove the plug – **DISCONNECT FROM THE MAINS** – and then cut it off the mains lead and immediately dispose of it safely. Never attempt to reuse the plug or insert it into a socket outlet as there is a danger of electric shock.

### Recycling Information

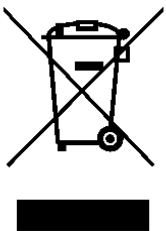
#### Disposal of the Packaging

Dispose of paper and cardboard in appropriate paper re-cycling facilities.

Dispose of recyclable plastics in appropriate plastic re-cycling facilities.

Dispose of non-recyclable plastics in the appropriate plastics collection service.

#### Disposal of the Product



You should now recycle your waste electrical goods and in doing so help the environment. This symbol means waste electrical products at the end of their useful life should not be disposed of with normal household waste and not sent to landfill. Please ensure it is taken to a suitable facility for disposal. Check with your Local Authority or retailer for recycling advice or visit [www.recycle-more.co.uk](http://www.recycle-more.co.uk) or [www.weeeireland.ie](http://www.weeeireland.ie) enter your postcode to find out your nearest recycling site.

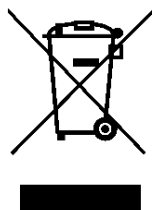
### Troubleshooting Guide

<i>Problem</i>	<i>Possible Cause</i>	<i>Possible Fix</i>
Pizza is Overcooked/Burnt	Cooking Temperature is set too high.	Check cooking temperature and lower the Temperature accordingly.
	Cooking time is too long.	Check cooking time and reduce the cooking time on the Timer accordingly.
Pizza is undercooked.	Cooking Temperature is set too low.	Check cooking temperature and increase the Temperature accordingly.
	Cooking time is too short.	Check cooking time and increase the cooking time on the Timer accordingly.
Unit does not power up	No power to the Oven.	Check that the mains plug is inserted into the socket and the socket is switched on (if applicable).
Unit doesn't start cooking	Start/Stop Button not pressed.	Press the Start/Stop Button.
Burning smell from unit	Previous food remains on cooking accessories.	Ensure all cooking accessories are cleaned after each use.

### ***Customer Support***

Should you require any product information, replacement parts or accessories, please contact our customer care team on 0161 831 7879 (8.30am-4.30pm Monday to Thursday, 8.00am-4.00pm Friday) and select option 3 or by contacting us via email: [help@daewooelectricals.com](mailto:help@daewooelectricals.com).

- Replacement parts and accessories are guaranteed for 1 year from the date of purchase.
- It is important to note that your warranty becomes invalid should non Daewoo parts or accessories be used with this appliance.

**UK  
CA****CE**



# DAEWOO®

## WARRANTY

*Thank you for purchasing your Daewoo product.*

*As part of our commitment to quality, we are offering you an extra 2 years warranty in addition to your 1 year guarantee*

Your Daewoo product is guaranteed for 1 year from the date of original purchase, with proof of purchase or receipt. If any defect should occur due to faulty workmanship or material, your faulty product should be returned to the place of purchase, replacement or refund is at the discretion of the retailer.

The guarantee is subject to the following provisions:

- The product must be correctly installed and operated in accordance with the requirements contained in the instruction manual.
- The product must be used solely for domestic purposes.
- It does not cover general wear and tear, damage, misuse or any consumable parts.
- The guarantee will be rendered invalid if the product is re-sold or has been damaged through inexpert repair.
- The guarantee is only valid within the UK and Eire.

Your standard 1 year guarantee will only be extended to the maximum available for your individual product upon registration. (Note: products must be registered individually and covers the main body and housing). If you do not register your product within 28 days of the original purchase date, your product will only be guaranteed for 1 year.

*To validate your extended 2 year warranty\*please register your purchase online within 28 days of the original purchase date by registering at:*

**<https://help.daewooelectricals.com>**

**or**

**[Contact Us \(daewooelectricals.com\)](https://www.daewooelectricals.com)**

\*Your extended warranty is only valid with proof of purchase receipt and subject to the conditions outlined above.

Daewoo® is a registered trademark.

Produced and imported under licence by:

UK: EuroSonic Group (ESG) Limited

Brightgate House

1 Brightgate Way

Manchester, M32 0TB, UK

EU Rep: EuroSonic Magppie (ESM) Ltd. Ireland, D05 X006

[www.esgltd.com](http://www.esgltd.com)