



DAEWOO®



STEAM GENERATOR IRON STATION
With detachable water tank



READING AND STORING THE USER MANUAL



Before using this product, please read through this manual carefully paying particular attention to the safety instructions. Failure to do so may result in personal injury or damage to the product.

Carefully save this instruction manual for future reference. Ensure the user manual is included when passing the product on to any third parties.

IMPORTANT SAFETY INSTRUCTIONS FOR PROPER USE

When using electrical appliances, basic safety precautions should always be followed.

Only use the product as described in this user manual. Any other use is considered improper and may result in damage to property or persons.

The manufacturer or vendor cannot be held liable for damages or injury incurred through improper or incorrect use.

- **Read and familiarise yourself with all operating instructions before using this Steam Station Iron.**
- Before plugging your steam station iron into the mains, visually check that the steam iron is intact and has not suffered any transit damage.
- Check that the voltage indicated on the data plate corresponds with that of the local network before connecting the appliance to the mains power supply.
- Close supervision is required when using this appliance near children.
- Never leave this appliance within reach of children.
- This appliance can be used by children aged from 8 years and above and persons with reduced physical, sensory and mental capabilities or lack of experience or knowledge if they have been given supervision or instruction concerning use if the appliance in a safe way and understand the hazards involved.
- Children shall not play with the appliance.
- Cleaning and user maintenance shall not be made by

- children unless they are older than 8 and supervised.
- Keep the appliance and its cord out of reach of children aged less than 8 years.
 - **DO NOT** leave the appliance unattended during use.
 - **DO NOT** leave the appliance unattended whilst connected to the mains supply.
 - Always use this appliance on a solid, level, non-flammable surface.
 - **DO NOT** use this appliance outdoors.
 - It is imperative to unplug the power cord after the appliance has been used, before it is cleaned and whilst being repaired.
 - If the power cable is damaged, it should only be replaced by suitable qualified personnel in order to avoid a hazard.
 - Repairs to electrical appliances should only be performed by qualified personnel. Improper repairs may place user at serious risk.
 - **DO NOT** operate this appliance with a damaged plug or cord, after a malfunction or after being dropped or damaged in any way.
 - Regular, periodic checks should be carried out on the mains cable to ensure no damage is evident. Should there be any signs of damage the appliance should not be used.
 - **DO NOT** allow the mains cable to hang over sharp edges or come in contact with hot surfaces.
 - **DO NOT** run the mains cable under carpets, rugs, etc.
 - Allow the unit to cool before storage.
 - Never place the appliance near to flammable material or high pressure containers.
 - This appliance is intended for household use only and should not be used for industrial purposes.
 - **DO NOT** use any accessories or attachments with this appliance other than those supplied or recommended by supplier.
 - **DO NOT** immerse the appliance, base or its cord in water

- or any other liquids.
- **DO NOT** use this appliance for anything other than its intended use.
 - **DO NOT** push objects into any openings as damage to the appliance and/or electric shock may occur.
 - Ensure appliance is situated in an open area, do not allow it to come in contact with or place beneath cupboards, curtains, wall coverings, clothing or other flammable materials.
 - Unplug after each use. Grasp the plug, not the cord.
 - **DO NOT** cover this appliance.
 - **CAUTION: The soleplate of the steam iron will get hot during use.**



THIS APPLIANCE MUST BE EARTHED

Explanation of Symbols

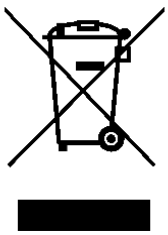
The following warning symbols or words are used in this instruction manual:



Products labelled with UK Conformity Assessment identifies products conforming to UK statutory requirements.



Products labelled with this symbol conform to applicable provisions of the European Economic Area.



You should now recycle your waste electrical goods and in doing so help the environment. This symbol means waste electrical products at the end of their useful life should not be disposed of with normal household waste and not sent to landfill. Please ensure it is taken to a suitable facility for disposal. Check with your Local Authority or retailer for recycling advice or visit www.recycle-more.co.uk or www.weeeireland.ie enter your postcode to find out your nearest recycling site.



This designates a hazard with moderate risk, which may result in severe injury if not adhered to.



This symbol provides useful additional information on the use of this product.



This symbol indicates that the supply uses an alternating current mains supply.



This symbol indicates that the surface gets hot and care must be taken

Before the First Use of Your Steam Station Iron

1. Remove all packing materials, including the plastic protective cover from the soleplate and discard responsibly.
2. Ensure all parts are present (if applicable) see **Description of Parts** below.
3. Wipe the soleplate of the steam iron using a soft, clean damp cloth and dry thoroughly.
4. **DO NOT** Immerse the steam station iron in water or any other liquid.

- i** Whilst using for the first time, a little smoke or odour may be emitted, this is normal and will soon pass.

Description of Parts



1. Water Tank/Base Unit
2. Base Unit Lock
3. Heating Indicator
4. Manual Steam Control
5. Temperature Control
6. Handle
7. Mains Cable/Water Monotube

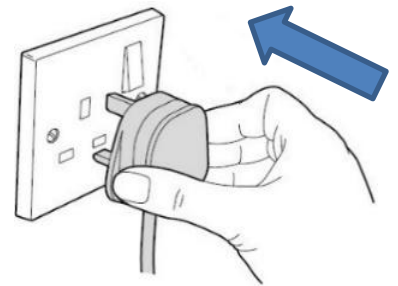
- i** To keep the base smooth and scratch free do not run the iron over metal objects such as zips, buttons etc.

Dry Ironing

1. Place the Steam Station **Base Unit** (1) on a solid level, heat resistant surface at a comfortable height for the user.
2. Refer to the ironing instructions on the garment to be ironed.
3. If the garment doesn't have any ironing instructions but you know the type of fabric used in the garment, use the chart below.
4. Fabrics with special finishes such as polishing, pleats etc. should be ironed at the lowest temperature setting.
5. With mixed fibres always select the lowest applicable temperature.
6. Group items with similar fibres together, as the iron heats up faster than it cools, start ironing items requiring the lowest temperature first.
7. Turn the **Temperature Control** (5) to the required setting according to the guide below:

- Position for Nylon/Silk/Synthetics (Low temperature)
- Position for Wool, Silk or mixtures (Medium temperature)
- Position for Cotton or Linen (Steam & High temperature)

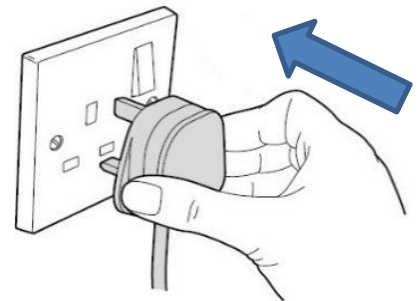
8. Insert the mains plug into the nearest socket, the **Heating Indicator (3)** will illuminate showing the iron is warming up. Once the **Heating Indicator (3)** goes out, the iron is ready for ironing.



- i** The **Heating Indicator (3)** will go on and off during use, this is quite normal.

Steam Ironing

1. Do not insert the mains plug into the mains socket at this stage.
2. Place the Steam Station **Base Unit (1)** on a solid, level heat resistant surface at a comfortable height for the user.
3. Fill the **Water Tank (1)** with cold water to the MAX level.
4. Set the **Temperature Control (5)** to the MAX setting.
5. Insert the mains plug into the nearest socket, the **Heating Indicator (3)** will illuminate showing the iron is warming up. Once the **Heating Indicator (3)** goes out, the iron is ready for steam ironing.
6. For continuous steam, press the **Manual Steam Control (4)** which will continuously release steam through the soleplate.



- i** If you live in a hard water area it is advised to use only distilled or demineralised water to reduce Limescale build up and maintain the performance of the steam station and extend the lifetime of the unit. To remove limescale deposits use a 75% water 25% vinegar solution.

- i** Do not store the iron with water in the water tank.

⚠ WARNING! Do not use chemically de-limed or perfumed water.

Care and Maintenance

- Before carrying out any cleaning or maintenance, ensure that the steam station iron is unplugged from the mains power supply and has fully cooled.
- Wipe the soleplate with a soft damp cloth and dry thoroughly, after pouring off any remaining water. The body of the iron can also be wiped down with a soft damp cloth, do not use harsh or abrasive cleaning products.

Technical Specification

Model No.	SDA1589
Rated Voltage	220-240V AC 50-60Hz
Rated Power	2200-2400W
Protection Class	I (This Appliance must be Earthed)
ErP: Power consumption of equipment in off mode shall not exceed 0.50W	0.01W
This equipment complies with Annex III of Commission Regulation (EU) 2023/826	

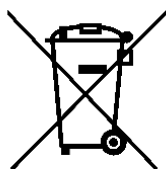
Disposal of the Packaging

Dispose of paper and cardboard in appropriate paper re-cycling facilities.

Dispose of recyclable plastics in appropriate plastic re-cycling facilities.

Dispose of non-recyclable plastics in the appropriate plastics collection service.

Disposal of the Product



You should now recycle your waste electrical goods and in doing so help the environment. This symbol means waste electrical products at the end of their useful life should not be disposed of with normal household waste and not sent to landfill. Please ensure it is taken to a suitable facility for disposal. Check with your Local Authority or retailer for recycling advice or visit www.recycle-more.co.uk or www.weeeireland.ie enter your postcode to find out your nearest recycling site.

Troubleshooting Guide

<i>Problem</i>	<i>Possible Cause</i>	<i>Possible Fix</i>
Unit not powering up.	Mains plug not in socket	Check that the mains plug is inserted into the socket and is switched on.
	Temperature Control is not set to the correct setting.	Rotate the Temperature Control clockwise to the required heat setting.
	Fuse has blown in the mains plug.	Check by substitution.
Unit does not steam.	The water reservoir may be empty.	Unplug the iron and fill as per the instructions.
White substance is appearing around spray outlet and soleplate.	Calcium deposits.	Use distilled or demineralised water

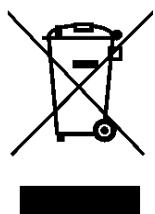
Customer Support

Should you require any product information, replacement parts or accessories, please contact our customer care team on 0161 831 7879 (8.30am-4.30pm Monday to Thursday, 8.00am-4.00pm Friday) and select option 3 or by contacting us via email:

help@daewooelectricals.com.

- Replacement parts and accessories are guaranteed for 1 year from the date of purchase.
- It is important to note that your warranty becomes invalid should non Daewoo parts or accessories be used with this appliance.

**UK
CA**





DAEWOO®

WARRANTY

Thank you for purchasing your Daewoo product.

As part of our commitment to quality, we are offering you an extra 2 years warranty in addition to your 1 year guarantee

Your Daewoo product is guaranteed for 1 year from the date of original purchase, with proof of purchase or receipt. If any defect should occur due to faulty workmanship or material, your faulty product should be returned to the place of purchase, replacement or refund is at the discretion of the retailer.

The guarantee is subject to the following provisions:

- The product must be correctly installed and operated in accordance with the requirements contained in the instruction manual.
- The product must be used solely for domestic purposes.
- It does not cover general wear and tear, damage, misuse or any consumable parts.
- The guarantee will be rendered invalid if the product is re-sold or has been damaged through inexpert repair.
- The guarantee is only valid within the UK and Eire.

Your standard 1 year guarantee will only be extended to the maximum available for your individual product upon registration. (Note: products must be registered individually and covers the main body and housing). If you do not register your product within 28 days of the original purchase date, your product will only be guaranteed for 1 year.

To validate your extended 2 year warranty please register your purchase online within 28 days of the original purchase date by registering at:*

<https://help.daewooelectricals.com>

or

[Contact Us \(daewooelectricals.com\)](https://www.daewooelectricals.com)

*Your extended warranty is only valid with proof of purchase receipt and subject to the conditions outlined above.

Daewoo is a registered trademark.
Produced and imported under license by
Eurosonic Group Limited
Brightgate House
1 Brightgate Way
Manchester M32 0TB UK
EU Rep: EuroSonic Magppie (ESM) Ltd. Ireland D05 X006
www.esgltd.com