



DAEWOO®



Product may differ slightly from images shown.

180° HEALTH GRILL

with additional drip cups & cool touch handle

User Manual

*Please refer to the warranty section for terms of your extended guarantee



READING AND STORING THE USER MANUAL



Before using this product, please read through this manual carefully paying particular attention to the safety instructions. Failure to do so may result in personal injury or damage to the product.

Carefully save this instruction manual for future reference. Ensure the user manual is included when passing the product on to any third parties.

IMPORTANT SAFETY INSTRUCTIONS FOR PROPER USE

When using electrical appliances, basic safety precautions should always be followed.

Only use the product as described in this user manual. Any other use is considered improper and may result in damage to property or persons.

The manufacturer or vendor cannot be held liable for damages or injury incurred through improper or incorrect use.

- **Read and familiarise yourself with all operating instructions before using this health grill.**
- Before plugging your unit into the mains, visually check that it is intact and has not suffered any transit damage.
- Check that the voltage indicated on the data plate corresponds with that of the local network before connecting the appliance to the mains power supply.
- **DO NOT** use this product with a programmer, timer, separate remote-control system or any other such device.
- **DO NOT** immerse this appliance in water or any other liquids.
- Cooking appliances should be positioned in a stable situation with the handles (if any) positioned to avoid spillage of liquids.
- **DO NOT** touch hot surfaces. Accessible surfaces are



liable to get hot during use. Always use the handle.

- Oven gloves should be used whilst using the health grill.
- Close supervision is required when using this appliance near children.
- Never leave this appliance within reach of children.
- This appliance shall not be used by children from 0 to 8 years.
- This appliance can be used by children aged from 8 years and above and persons with reduced physical, sensory or mental capabilities or lack of experience and knowledge if they have been given supervision or instruction concerning use of the appliance in a safe way and understand the hazards involved.
- Children shall not play with the appliance.
- Keep the appliance and its cord out of reach of children less than 8 years.
- Cleaning and user maintenance shall not be made by children.
- **DO NOT** leave the appliance unattended during use.
- **DO NOT** leave the appliance unattended whilst connected to the mains supply.
- Always use this appliance on a solid, level, non-flammable surface.
- **DO NOT** use this appliance outdoors.
- It is imperative to unplug the power cord after the appliance has been used, before it is cleaned and whilst being repaired.
- Regular, periodic checks should be carried out on the supply cord to ensure no damage is evident. Should there be any signs of damage the appliance should not be used.
- If the supply cord is damaged it is to be replaced by a

qualified person in order to avoid a hazard.

- **DO NOT** operate this appliance with a damaged plug or cord, after a malfunction or after being dropped or damaged in any way.
- **DO NOT** allow the mains cable to hang over sharp edges or come in contact with hot surfaces.
- Allow the unit to cool before storage.
- Never place the appliance near to flammable material or high-pressure containers.
- This appliance is intended for household use only and should not be used for industrial purposes.
- **DO NOT** use any accessories or attachments with this appliance other than those supplied or recommended by supplier.
- **DO NOT** use this appliance for anything other than its intended use.
- **DO NOT** push objects into any openings as damage to the appliance and/or electric shock may occur.
- Ensure appliance is situated in an open area, do not allow it to come in contact with cupboards, curtains, wall coverings, clothing or other flammable materials.
- Unplug after each use. Grasp the plug, not the cord.
- **DO NOT** cover this appliance.
- Never place this appliance on an electric, gas, or any other type of hob.
- Ensure adequate ventilation whilst cooking foods that are prone to giving off smoke.
- **WARNING do not attempt to move the health grill whilst it is hot.**
- **WARNING this appliance must be earthed.**
- Clean the cooking plates with clean damp soft cloth – do not use harsh abrasives or chemicals.

Explanation of Symbols

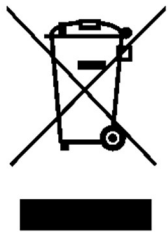
The following warning symbols or words are used in this instruction manual:



Products labelled with UK Conformity Assessment identifies products conforming to UK statutory requirements.



Products labelled with this symbol conform to applicable provisions of the European Economic Area.



You should now recycle your waste electrical goods and in doing so help the environment. This symbol means waste electrical products at the end of their useful life should not be disposed of with normal household waste and not sent to landfill. Please ensure it is taken to a suitable facility for disposal. Check with your Local Authority or retailer for recycling advice or visit www.recycle-more.co.uk or www.weeeireland.ie, enter your postcode to find out your nearest recycling site.



This designates a hazard with moderate risk, which may result in severe injury if not adhered to.



This symbol provides useful additional information on the use of this product.

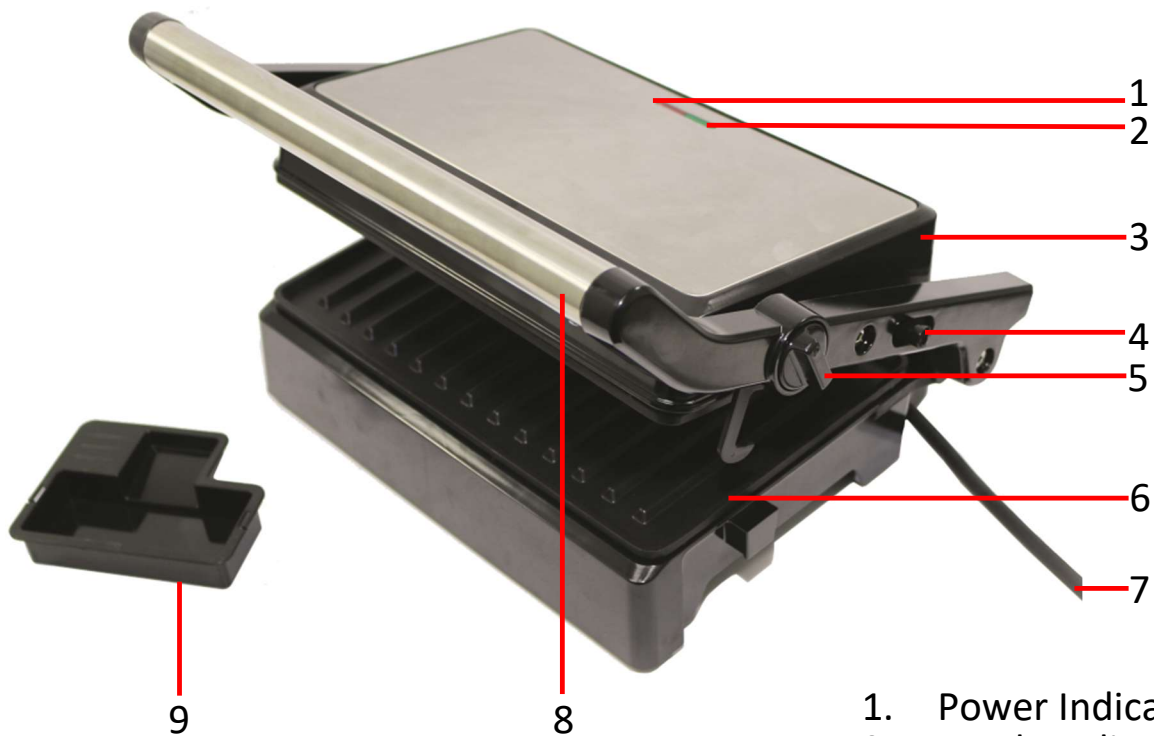


This symbol indicates that the supply uses an alternating current mains supply.



This symbol indicates that the surface is gets hot and care must be taken.

Description of Parts



1. Power Indicator
2. Ready Indicator
3. Upper housing
4. 180° Catch
5. Hook Lock Dial
6. Cooking Plate
7. Power Cord
8. Handle
9. Drip Tray

Power Indicator (1)

Ready Indicator (2)



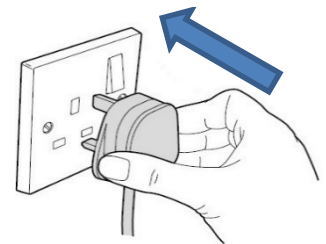
Before the first time you use your Health Grill

- Remove all packing materials and discard responsibly.
- Ensure all parts are present see **Description of Parts** above.
- Check that there is no damage to the mains cable or product.
- Ensure that you clean your Grill before first and every use with a damp cloth and dry thoroughly.
- Whilst using the grill for the first time you may notice a little smoke and odour; this is normal and simply the grease used during manufacture and will soon pass.

⚠ WARNING! Accessible surfaces are liable to get hot during use. Always use the handle.

Setting up Your Health Grill

1. Place the Health Grill on a solid, level heat resistant surface at a comfortable height for the user, within reach of a mains socket.
2. Place the **Drip Tray** (9) into the health grill housing as shown right. Whilst the food cooks, excess fat produced will drain away through the channels on both **Cooking Plates** (6) into the **Drip Tray** (9).
3. Insert the mains plug into the mains socket.
4. The **Power Indicator** (1) and **Ready Indicator** (2) will illuminate and the grill will begin to heat the **Cooking Plates** (6).
5. Once the **Cooking Plates** (6) are at the correct cooking temperature the **Ready Indicator** (2) will go out and the grill is now ready to cook your food.
6. Raise the **Upper Housing** (3) using the **Handle** (8) and then place the food to be cooked onto the bottom **Cooking Plate** (6) and then lower the **Upper Housing** (3) using the **Handle** (8).



- i** The **Upper Housing** (3) cooking plate is allowed to adjust for the height of larger items of food, as it has a floating lid and so maintains even contact with the food for best results.
- i** The **Ready Indicator** (2) will cycle on and off during the cooking process to show that the temperature is being maintained throughout.

Using Your Health Grill as an open Grill

1. Place the grill on a solid, level, non - flammable surface away from wall cupboards, curtains, etc.
2. Ensure there is ample room for the grill to fully open out.
3. Whilst holding the grill by the **Handle** (8) slide the **180° Catch** (4) towards you and lift open the grill until it lies flat on the work surface.
4. The **Power Indicator** (1) and **Ready Indicator** (2) will illuminate and the grill will begin to heat the **Cooking Plates** (6).
5. Once the **Cooking Plates** (6) are at the correct cooking temperature the **Ready Indicator** (2) will go out and the grill is now ready to cook your food. (A click sound will be heard as well)



- i** Once the food has cooked*, remove the food using wooden or plastic utensils. DO NOT use metal utensils as this may damage the non-stick coating on the **Cooking Plates** (6).
*Cooking times will vary according to food types and personal taste.

Care and Maintenance

- Before carrying out any cleaning or maintenance, ensure that the Health Grill is unplugged from the mains power supply.
- Allow the unit to cool before cleaning.
- Do not clean any part of your health grill in a dishwasher.
- Do not submerge any part of the main body of the grill or mains cable in water or any other liquids.
- Wipe any excess oil/grease from the cooking plates with kitchen roll or similar.
- Wipe clean the outside of the main body and the cooking plates with a soft damp cloth.
- Wash the drip tray in warm soapy water and dry thoroughly afterwards.
- Never clean any part of the health grill with harsh or abrasive cleaners.
- When storing away please ensure that the Hook Lock Dial is in place and the two sections are securely held together.

Non-Rewireable Mains Plug

If your appliance is supplied with a non-rewireable plug fitted to the mains lead and should the fuse needed replacing, you must use an ASTA approved one (conforming to BS 1362 of the same rating). Never use a plug with the fuse cover missing. If in doubt, consult a qualified electrician.

If you need to remove the plug **-DISCONNECT FROM THE MAINS-** and then cut it off the mains lead and immediately dispose of it safely. Never attempt to reuse the plug or insert it into a socket outlet as there is a danger of electric shock.

Technical Specification

Supply Voltage	220V-240V~ 50/60Hz
Rated power	1500W
Protection Class	I (This appliance must be earthed)
Model Number	SDA1572
ErP	0,00W
This Equipment complies with Annex III of the Commission Regulation (EU) 2023/826	

Recycling Information

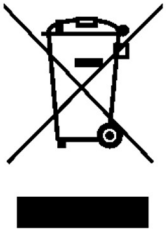
Disposal of the Packaging

Dispose of paper and cardboard in appropriate paper re-cycling facilities.

Dispose of recyclable plastics in appropriate plastic re-cycling facilities.

Dispose of non-recyclable plastics in the appropriate plastics collection service.

Disposal of the Product



You should now recycle your waste electrical goods and in doing so help the environment. This symbol means waste electrical products at the end of their useful life should not be disposed of with normal household waste and not sent to landfill. Please ensure it is taken to a suitable facility for disposal. Check with your Local Authority or retailer for recycling advice or visit www.recycle-more.co.uk or www.weeeireland.ie, enter your postcode to find out your nearest recycling site.

Customer Support

Should you require any product information, replacement parts or accessories, please contact our customer care team on 0161 831 7879 (8.30am-4.30pm Monday to Thursday, 8.00am-4.00pm Friday) and select option 3 or by contacting us via email:

help@daewooelectricals.com.

- Replacement parts and accessories are guaranteed for 1 year from the date of purchase.
- It is important to note that your warranty becomes invalid should non Daewoo parts or accessories be used with this appliance.



DAEWOO®

WARRANTY

Thank you for purchasing your Daewoo product.

As part of our commitment to quality, we are offering you an extra 2 years warranty in addition to your 1 year guarantee

Your Daewoo product is guaranteed for 1 year from the date of original purchase, with proof of purchase or receipt. If any defect should occur due to faulty workmanship or material, your faulty product should be returned to the place of purchase, replacement or refund is at the discretion of the retailer.

The guarantee is subject to the following provisions:

- The product must be correctly installed and operated in accordance with the requirements contained in the instruction manual.
- The product must be used solely for domestic purposes.
- It does not cover general wear and tear, damage, misuse or any consumable parts.
- The guarantee will be rendered invalid if the product is re-sold or has been damaged through inexpert repair.
- The guarantee is only valid within the UK and Eire.

Your standard 1 year guarantee will only be extended to the maximum available for your individual product upon registration. (Note: products must be registered individually and covers the main body and housing). If you do not register your product within 28 days of the original purchase date, your product will only be guaranteed for 1 year.

To validate your extended 2 year warranty* please register your purchase online within 28 days of the original purchase date by registering at

*Your extended warranty is only valid with proof of purchase receipt and subject to the conditions outlined above.

<https://help.daewooelectricals.com>

or

[Contact Us \(daewooelectricals.com\)](https://www.daewooelectricals.com)

Daewoo is a registered trademark.

Produced and imported under license by

Eurosonic Group Limited

Brightgate House

1 Brightgate Way

Manchester M32 0TB UK

EU Rep: EuroSonic Magppie (ESM) Ltd. Ireland D05 X006

www.esgltd.com