



*Please refer to the warranty section for terms of your extended guarantee



3 TRAY BUFFET SERVER

Contents

Page No.

2	Contents
3	Reading and Storing the User Manual
3	Important Safety Instructions for Proper Use
6	Explanation of Symbols
7	Description of Parts
7	Before First Use of Your Buffet Server
7	Assembling Your Buffet Server
8	Using Your Buffet Server
9	Using The Hotplate as a Plate Warmer
9	Care and Maintenance
10	Troubleshooting
10	Technical Specification
10	Plug Wiring Information
11	Recycling Electrical Products
11	Customer Support
Back Page	Warranty Information

READING AND STORING THE USER MANUAL




Before using this product, please read through this manual carefully paying particular attention to the safety instructions. Failure to do so may result in personal injury or damage to the product.

Carefully save this instruction manual for future reference. Ensure the user manual is included when passing the product on to any third parties.

IMPORTANT SAFETY INSTRUCTIONS FOR PROPER USE

When using electrical appliances, basic safety precautions should always be followed.

Only use the product as described in this user manual. Any other use is considered improper and may result in damage to property or persons. The manufacturer or vendor cannot be held liable for damages or injury incurred through improper or incorrect use.

- **Read and familiarise yourself with all operating instructions before using this Buffet Server.**
- Before plugging your unit into the mains, visually check that it is intact and has not suffered any damage in transit.
- Check that the voltage indicated on the data plate corresponds with that of the local network before connecting the appliance to the mains power supply.
- **DO NOT** use this product with a programmer, timer, separate remote-control system or any other such device.
- **DO NOT** immerse this appliance in water or any other liquids.
- Cooking appliances should be positioned in a stable situation with the handles (if applicable) positioned to avoid spillage of liquids.
- **DO NOT** touch hot surfaces. Accessible surfaces are liable to get during use. Always use the handles. 
- Oven gloves should be used whilst using the Buffet Server.
- Close supervision is required when using this appliance near children.

- Never leave this appliance within reach of children.
- This appliance can be used by children aged from 8 years and above and persons with reduced physical, sensory and mental capabilities or lack of experience or knowledge if they have been given supervision or instruction concerning use of the appliance in a safe way and understand the hazards involved.
- Children shall not play with the appliance.
- Keep the appliance and its cord out of reach of children aged less than 8 years.
- Cleaning and user maintenance shall not be made by children unless they are older than 8 and supervised.
- **DO NOT** leave the appliance unattended during use.
- **DO NOT** leave the appliance unattended whilst connected to the mains supply.
- Always use this appliance on a solid, level, non-flammable surface.
- **DO NOT** use this appliance outdoors.
- It is imperative to unplug the power cord after the appliance has been used, before it is cleaned and whilst being repaired.
- Regular, periodic checks should be carried out on the mains cable to ensure no damage is evident. Should there be any signs of damage the appliance should not be used.
- If the power cable is damaged, it should only be replaced by suitable qualified personnel in order to avoid a hazard.
- **DO NOT** operate this appliance with a damaged plug or cord, after a malfunction or after being dropped or damaged in any way.
- **DO NOT** allow the mains cable to hang over sharp edges or come in contact with hot surfaces.

- Allow the unit to cool before storage.
- Never place the appliance near to flammable material or high pressure containers.
- This appliance is intended for household use only and should not be used for industrial purposes.
- **DO NOT** use any accessories or attachments with this appliance other than those supplied or recommended by supplier.
- **DO NOT** immerse the appliance, base or its cord in water or any other liquids.
- **DO NOT** use this appliance for anything other than its intended use.
- **DO NOT** push objects into any openings as damage to the appliance and/or electric shock may occur.
- Ensure appliance is situated in an open area, do not allow it to come in contact with or place beneath cupboards, curtains, wall coverings, clothing or other flammable materials.
- Unplug after each use. Grasp the plug, not the cord.
- **DO NOT** cover this appliance.
- Never place this appliance on an electric, gas, or any other type of hob.
- Repairs to electrical appliances should only be performed by qualified personnel. Improper repairs may place user at serious risk.
- **DO NOT** run the mains cable under carpets, rugs, etc.
- **CAUTION: The outside surface of the Buffet Server will get hot during use. Do not attempt to move the unit whilst it is hot.**
- Clean the hotplate with a clean damp soft cloth – do not use harsh abrasives or chemicals.

THIS APPLIANCE MUST BE EARTHED

Explanation of Symbols

The following warning symbols or words are used in this instruction manual:



Products labelled with UK Conformity Assessment identifies products conforming to UK statutory requirements.

Products labelled with this symbol conform to applicable provisions of the European Economic Area.



This designates a hazard with moderate risk, which may result in severe injury if not adhered to.



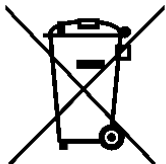
This symbol provides useful additional information on the use of this product.



This symbol indicates that the supply uses an alternating current mains supply.



This symbol indicates that the surface is gets hot and care must be taken.



You should now recycle your waste electrical goods and in doing so help the environment. This symbol means waste electrical products at the end of their useful life should not be disposed of with normal household waste. Please ensure it is taken to a suitable facility for disposal. Check with your Local Authority or retailer for recycling advice or visit www.recycle-more.co.uk or www.weeeireland.ie, enter your postcode to find out your nearest recycling site.

Description of Parts



1. Warming Tray (x3)
2. Lid (x3)
3. Handle(s)
4. Temperature Control
5. Indicator Light
6. Tray Support Frame
7. Hotplate

Before first use of Your Buffet Server

Remove all packing materials and discard responsibly.

Before using the Buffet Server for the first time, wash all the Warming Trays and Lids in warm soapy water, rinse and dry thoroughly afterwards.

DO NOT immerse the Hotplate assembly in water or any other liquids.

Assembling Your Buffet Server

1. Place the **Hotplate** (7) on a solid, level, heat resistant surface clear of all obstructions as described above.



2. Place the **Tray Support Frame** (6) onto the **Hotplate** (7) as shown right.

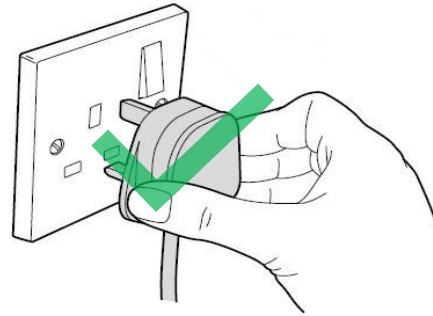


3. Place the **Warming Trays** (1) onto the **Tray Support Frame** (6) as shown right.



Using Your Buffet Server

1. Insert the mains plug into a nearby socket and switch the socket on (if applicable).



2. Rotate the **Temperature Control** (4) clockwise to increase the server temperature and anticlockwise to reduce the temperature.
3. The **Indicator Light** (5) will illuminate to show the **Hotplate** (7) is being heated. The light will go on and off to show the set temperature is being maintained, this is quite normal.



4. For best results. It is recommended the appliance is Pre-Heated for 10 minutes before adding food to the **Warming Trays** (1).
5. Food will stay warmer if the **Lids** (2) are in place as shown below:



6. It is not recommended to keep this appliance on for more than 6 hours at any one time.

- i** Do not move the buffet server whilst it is on or whilst it is cooling.
- i** The buffet server can be used to keep food warm but it is not designed to heat food from cold. All food placed in the buffet server must be thoroughly cooked through.
- i** **DO NOT** use to heat chilled or frozen food.

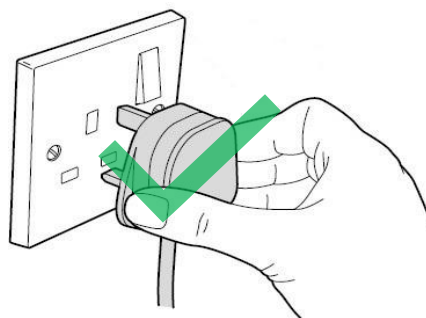
Using the Hotplate as a Plate Warmer

The **Hotplate** (7) of the Buffet server can be used on its own to keep plates and containers of food warm.

1. Place the **Hotplate** (7) on a solid level, heat resistant surface clear of all obstructions and place the plates or metal containers directly on the **Hotplate** (7).



2. Insert the mains plug into a nearby socket and switch the socket on (if applicable).

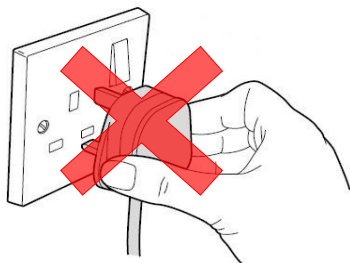


3. Rotate the **Temperature Control** (4) clockwise to increase the temperature of the **Hotplate** (7) and anticlockwise to reduce the Temperature.

4. The **Indicator Light** (5) will illuminate to show the **Hotplate** (7) is being heated. The light will go on and off to show the set temperature is being maintained, this is quite normal.



Care and Maintenance



- Always unplug the Buffet Server from the mains supply and allow to cool before cleaning.
- **DO NOT** clean any part of your Buffet Server in a dishwasher. – **NOT** dishwasher safe
- **DO NOT** submerge any part of the main body or mains cable in water or any other liquids.
- Wipe the outside of the main body clean with a soft damp cloth.
- Never clean any part of the Buffet Server with harsh or abrasive cleaners.

Troubleshooting Guide

<i>Symptom</i>	<i>Possible Cause</i>	<i>Possible Solution</i>
Unit does not power up	No power to the Buffet Server.	Check that the mains plug is inserted into the socket and the socket is switched on (if applicable).
	Fuse has blown in the mains plug.	Check by substitution.
Food is cold	Temperature Control is set too low.	Check cooking temperature control and increase accordingly.
	Lids are not fitted.	Ensure the Lids are fitted.
Food is overcooked	Temperature Control is set too high.	Check cooking temperature control and decrease accordingly.

Technical Specification

Rated Voltage	220-240V~ 50-60Hz
Rated Power	200W
Model Number	SDA1404
Protection Class	I (This Appliance Must Be Earthed)
Power consumption of equipment in Off Mode shall not exceed 0,3W	No standby mode 0,00W
This Equipment complies with Annex III of the Commission Regulation (EU) 2023/826	

Non-Rewireable Mains Plug

If your appliance is supplied with a non-rewireable plug fitted to the mains lead and should the fuse needed replacing, you must use an ASTA approved one (conforming to BS 1362 of the same rating). Never use a plug with the fuse cover missing. If in doubt, consult a qualified electrician.

If you need to remove the plug -**DISCONNECT FROM THE MAINS**- and then cut it off the mains lead and immediately dispose of it safely. Never attempt to reuse the plug or insert it into a socket outlet as there is a danger of electric shock.

Recycling Information

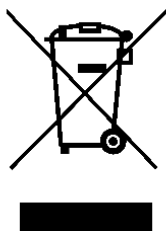
Disposal of the Packaging

Dispose of paper and cardboard in appropriate paper re-cycling facilities.

Dispose of recyclable plastics in appropriate plastic re-cycling facilities.

Dispose of non-recyclable plastics in the appropriate plastics collection service.

Disposal of the Product

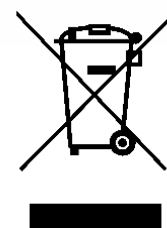


You should now recycle your waste electrical goods and in doing so help the environment. This symbol means waste electrical products at the end of their useful life should not be disposed of with normal household waste and sent to landfill. Please ensure it is taken to a suitable facility for disposal. Check with your Local Authority or retailer for recycling advice or visit www.recycle-more.co.uk or www.weeeireland.ie, enter your postcode to find out your nearest recycling site.

Customer Support

Should you require any product information, replacement parts or accessories, please contact our customer care team on 0161 831 7879 (8.30am-4.30pm Monday to Thursday, 8.00am-4.00pm Friday) and select option 3 or by contacting us via email: help@daewooelectricals.com.

- Replacement parts and accessories are guaranteed for 1 year from the date of purchase.
- It is important to note that your warranty becomes invalid should non Daewoo parts or accessories be used with this appliance.





DAEWOO®

WARRANTY

Thank you for purchasing your Daewoo product.

As part of our commitment to quality, we are offering you an extra 2 years warranty in addition to your 1 year guarantee

Your Daewoo product is guaranteed for 1 year from the date of original purchase, with proof of purchase or receipt. If any defect should occur due to faulty workmanship or material, your faulty product should be returned to the place of purchase, replacement or refund is at the discretion of the retailer.

The guarantee is subject to the following provisions:

- The product must be correctly installed and operated in accordance with the requirements contained in the instruction manual.
- The product must be used solely for domestic purposes.
- It does not cover general wear and tear, damage, misuse or any consumable parts.
- The guarantee will be rendered invalid if the product is re-sold or has been damaged through inexpert repair.
- The guarantee is only valid within the UK and Eire.

Your standard 1 year guarantee will only be extended to the maximum available for your individual product upon registration. (Note: products must be registered individually and covers the main body and housing). If you do not register your product within 28 days of the original purchase date, your product will only be guaranteed for 1 year.

To validate your extended 2 year warranty* please register your purchase online within 28 days of the original purchase date by registering at:

<https://help.daewooelectricals.com>

or

[Contact Us \(daewooelectricals.com\)](https://www.daewooelectricals.com)

*Your extended warranty is only valid with proof of purchase receipt and subject to the conditions outlined above.

Daewoo is a registered trademark.
Produced and imported under licence by
Eurosonic Group Limited
Brightgate House
1 Brightgate Way
Manchester M32 0TB UK
EU Rep: EuroSonic Magppie (ESM) Ltd. Ireland D05 X006
www.esgltd.com