



1.8L STAINLESS STEEL **RICE COOKER**

with steamer basket

User Manual



*Please refer to the warranty section for terms of your extended guarantee

READING AND STORING THE USER MANUAL



Before using this product, please read through this manual carefully paying particular attention to the safety* instructions. Failure to do so may result in personal injury or damage to the product.

Please refer to the warranty section for terms of your extended guarantee.

Carefully save this instruction manual for future reference. Ensure the user manual is included when passing the product on to any third parties.

IMPORTANT SAFETY INSTRUCTIONS FOR PROPER USE

When using electrical appliances, basic safety precautions should always be followed.

Only use the product as described in this user manual. Any other use is considered improper and may result in damage to property or persons.

The manufacturer or vendor cannot be held liable for damages or injury incurred through improper or incorrect use.

- **Read and familiarise yourself with all operating instructions before using this Rice Cooker & Steamer.**
- Before plugging your unit into the mains, visually check that the unit is intact and has not suffered any transit damage.
- Check that the voltage indicated on the data plate corresponds with that of the local network before connecting the appliance to the mains power supply.
- Close supervision is required when using this appliance near children.
- Never leave this appliance within reach of children.
- This appliance can be used by children from 8 years and above if they have been given supervision or instruction concerning use of the appliance in a safe way and understand the hazards involved.
- Cleaning and user maintenance shall not be made by children unless they are older than 8 and supervised.
- Keep the appliance and its cord out of reach of children less than 8 years.
- Appliances can be used by persons with reduced physical, sensory or mental capabilities or lack of experience and

knowledge if they have been given supervision or instruction concerning use of the appliance in a safe way and understand the hazards involved.

- Children shall not play with the appliance.
- Always use this appliance on a solid, level, non-flammable surface.
- **DO NOT** use this appliance outdoors.
- It is imperative to unplug the power cord after the appliance has been used, before it is cleaned and whilst being repaired.
- If the power cable is damaged, it should only be replaced by suitable qualified personnel in order to avoid a hazard.
- Repairs to electrical appliances should only be performed by qualified personnel. Improper repairs may place user at serious risk.
- **DO NOT** operate this appliance with a damaged plug or cord, after a malfunction or after being dropped or damaged in any way.
- Regular, periodic checks should be carried out on the mains cable to ensure no damage is evident. Should there be any signs of damage the appliance should not be used.
- **DO NOT** allow the mains cable to hang over sharp edges or come in contact with hot surfaces.
- **DO NOT** run the mains cable under carpets, rugs, etc.
- Always allow the unit to cool before storage or cleaning.
- Never place the appliance near to flammable material or high pressure containers.
- This appliance is intended for household use only and should not be used for industrial purposes.
- **DO NOT** use accessories with this appliance other than those recommended by the supplier.
- **DO NOT** immerse the appliance or its cord in water or any other liquids.
- **DO NOT** use this appliance for anything other than its intended use.
- **DO NOT** push objects into any openings as damage to the

appliance and/or electric shock may occur.

- Ensure appliance is situated in an open area, do not allow it to come in contact with or place beneath cupboards, curtains, wall coverings, clothing or other flammable materials.
- Unplug after each use. Grasp the plug, not the cord.
- **DO NOT** cover this appliance.
- Never place this appliance on an electric, gas, or any other type of hob.
- **DO NOT** use this appliance with an extension cable.
- **DO NOT** touch hot surfaces. Use the handles and/or knobs provided.
- **DO NOT** use this appliance with an external timer or separate remote-control system or any other device that switches the cooker on automatically.
- Disconnect the appliance from the mains after use.
- Always disconnect the plug from the mains before cleaning.
- Keep away from splashes of water or damp conditions.
- **DO NOT** touch hot surfaces. Accessible surfaces are liable to get hot during use. Always use the handles provided.
- Oven gloves should be worn when using this appliance.
- Hot steam may be released when opening and closing the appliance during use – **Risk of scalding!**
- Avoid moving the appliance whilst it is still hot or contains hot food or liquids. Turn the appliance off and disconnect from the mains and let it cool sufficiently before moving it.
- Always carry the appliance with both hands. Always use oven gloves – **Burn hazard!**
- Position the steam vent so that it sends steam away from the user.

THIS APPLIANCE MUST BE EARTHED

Explanation of Symbols

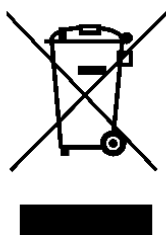
The following warning symbols or words are used in this instruction manual:



Products labelled with this symbol conform to applicable provisions of the European Economic Area.



Products labelled with UK Conformity Assessment identifies products conforming to UK statutory requirements.



You should now recycle your waste electrical goods and in doing so help the environment. This symbol means waste electrical products at the end of their useful life should not be disposed of with normal household waste and not sent to landfill. Please ensure it is taken to a suitable facility for disposal. Check with your Local Authority or retailer for recycling advice or visit www.recycle-more.co.uk, enter your postcode to find out your nearest recycling site.



This symbol provides useful additional information on the use of this product.



This symbol indicates that the supply uses an alternating current mains supply.



This designates a hazard with moderate risk, which may result in severe injury if not adhered to.

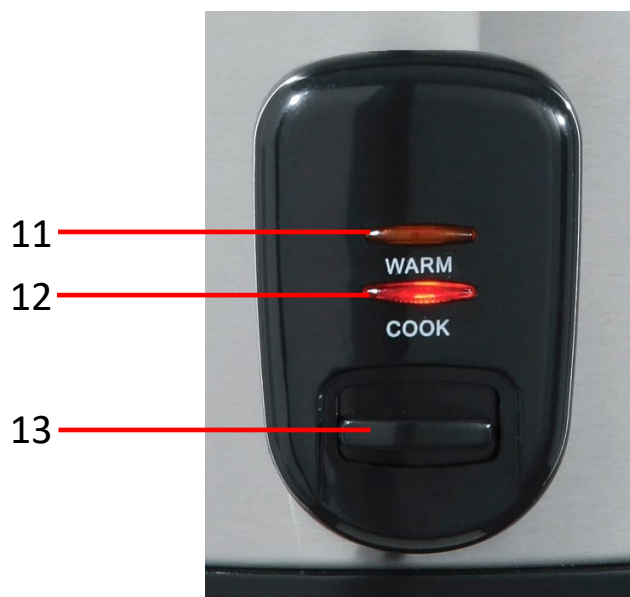
Description of Parts

1. Handle
2. Steam Vent
3. Glass Lid
4. Steamer
5. Bowl
6. Rice Cooker Body
7. On/Off Switch
8. Control Panel
9. Measuring Cup
10. Spoon



Description of Parts – Control Panel (10)

11. Warm Light (Illuminates when cooking has finished)
12. Cook Light (Illuminates during cooking)
13. Cook Lever (Push the lever down to cook – pops up after cooking is completed).



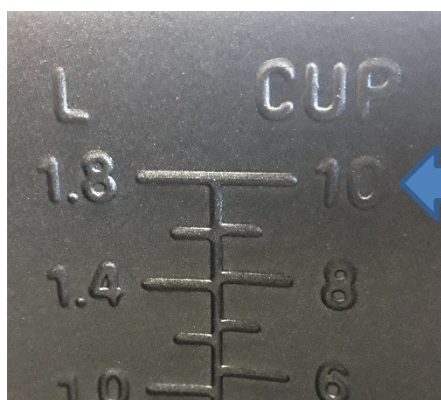
Before the First Use of Your Rice Cooker

1. Remove all packing materials and discard responsibly.
2. Ensure all parts are present (if applicable) see **Description of Parts** above.
3. Wash the **Glass Lid** (3), **Steamer** (4) and the **Bowl** (5) in warm soapy water. Rinse thoroughly and allow to dry before use.
4. **DO NOT** Immerse the **Rice Cooker Body** (6) in water or any other liquid or put it into a dishwasher.

i Whilst using the Rice Cooker for the first time, a little smoke or odour may be emitted, this is normal and will soon pass.

Hints and Tips for Rice Cooking

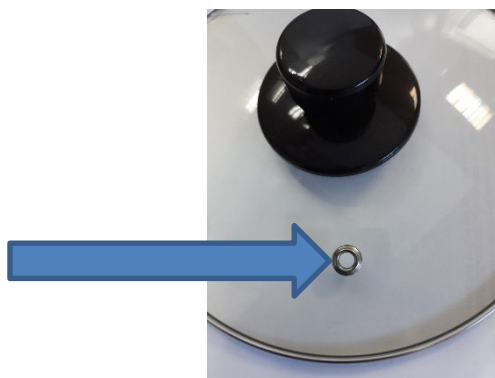
- Before cooking, place your rice in a sieve and wash thoroughly under a running tap until the water runs clear and any excess starch is removed.
- For best results, only use ordinary rice (Long Grain, Basmati, etc.) rather than the 'easy cook' variety which tends to be stickier and may stick to the base of the bowl.
- The minimum amount of rice that can be cooked is four **Measuring Cups** (9) of rice.
- The maximum amount of rice and water should never exceed the 1.8L/10 Cup mark on the **Bowl** (5) as arrowed below:



Left: the arrow shows the maximum amount of rice and water that can be cooked in the **Bowl** (5).

- Always place the **Glass Lid** (3) onto the cooker during cooking, ensure that the **Steam Vent** (2) is positioned away from the user.

Right: the arrow shows the **Steam Vent** (2), rotate the **Glass Lid** (3) until it is away from the user.



Instructions for use – Rice Cooking Guide

White Rice (Basmati, Long Grain, American, Jasmine, Thai, Risotto, etc.)

Measuring Cups of Rice Required	Weight of Rice (approx.) *	Amount of Water Required	Serves
4	600g	4 Cup mark	5-6
6	900g	6 Cup mark	8-10
8	1200g	8 Cup mark	13-14
10	1500g	10 Cup mark	16-18

Brown Rice and Brown Basmati Rice

i #For Brown rice and brown Basmati rice, the amount of water used has to be increased slightly as shown in the table below:

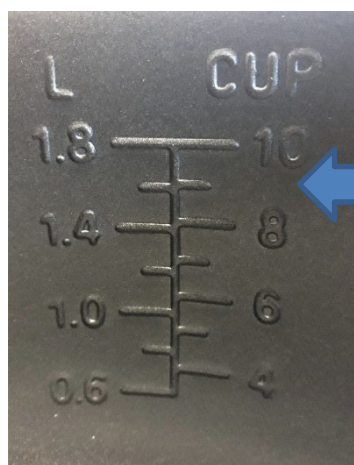
Measuring Cups of Rice Required	Weight of Rice (approx.) *	Amount of Water Required #	Serves
4	500g	4.5 Cup mark	5-6
6	800g	6.5 Cup mark	8-10
8 (maximum quantity for brown rice)	1000g	8.5 Cup mark	13-14

i *The weight of rice varies between varieties of rice therefore the weights shown are for guidance only.

i The cooking time for the rice is determined automatically by the Rice Cooker which depends on the quantity of water and rice in the **Bowl (5)**.

Using Your Rice Cooker

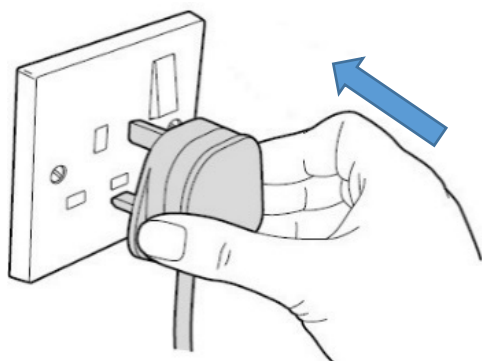
1. First fill the Rice Cooker **Bowl (5)** from the tap with the desired amount of water for the amount of rice to be cooked – see the '**Amount of Water Required**' column in the table(s) above.



2. Fill the Bowl with water to the corresponding 'CUP mark' number according to the tables above.

i The equivalent amount of water in Litres is shown on the opposite scale.

- Next add the rice to the water according to the amount of water using the **Measuring Cup** (9) – following the table above.
- Place the **Rice Cooker Body** (6) on a solid, level, heat resistant surface, away from the edge of the work surface and at a comfortable height for the user. Ensure that the cooker is not used below cupboards or near curtains, etc.
- Once the water and rice are added, carefully lower the **Bowl** (5) into the **Rice Cooker Body** (6), turn the bowl gently to the left and right to ensure that it is correctly settled in place.
- Place the **Glass Lid** (3) onto the **Bowl** (5), ensure that the **Steam Vent** (2) is positioned away from the user:



- Insert the mains plug (with dry hands) into the mains socket and switch on (if applicable).

- Switch the unit on by pressing the **On/Off Switch** (7) on the left-hand side of the unit to the 'I' position, the **Warm Light** (11) will illuminate as below:



9. Push the **Cook Lever** (13) on the **Control Panel** (10) down to begin cooking – the **Cook Light** (12) will illuminate and the Rice Cooker will begin cooking the rice.



⚠ WARNING! During cooking it is normal for steam to be emitted from the **Steam Vent** (2).

⚠ WARNING! **DO NOT** cover the **Steam Vent** (2) in the lid in order to prevent boiling over and/or scalding.

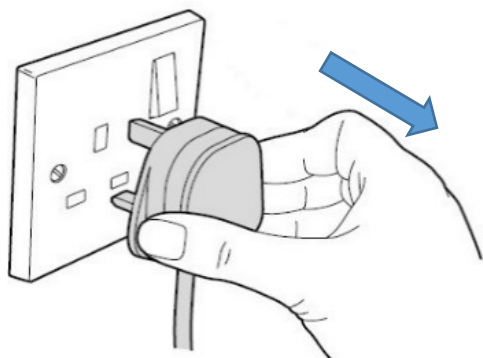
10. Once the cooking is complete, the **Cook Lever** (13) will pop up and the cooker will switch to warm mode and the **Warm Light** (11) will illuminate.
11. The rice will be now ready to serve.

i Keep the **Glass Lid** (3) in place after serving to keep the remaining rice in the bowl warm and fresh also to reduce rice from drying out and/or discolouring:

i It is recommended not to keep food warm for too long as it will result in the rice becoming dry and the flavour may alter.

12. Switch the unit off by pressing the **On/Off Switch** (7) on the left-hand side of the unit to the 'O' position.

13. After use, unplug the unit from the mains socket as below:



Instructions for use – Using the Food Steamer (4)

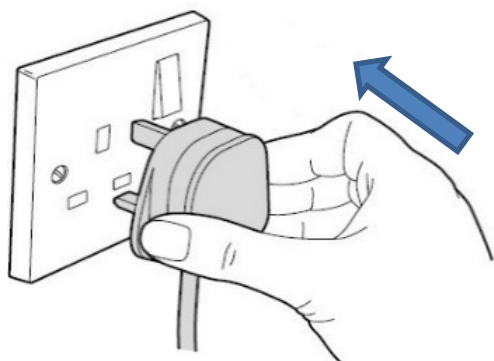
Your Rice cooker is also a Food Steamer.

1. To use your **Steamer (4)**, add water to the bowl following the steaming guide below using the small cup supplied. Place the **Bowl (5)** inside the cooker, turn the bowl gently to the left and right to ensure that it is correctly settled in place.



2. Place the **Steamer (4)** on the rim of the **Bowl (5)**.

3. Place the food to be steamed in the **Steamer (4)** and fit the **Glass Lid (3)** onto the steamer, ensuring that the **Steam Vent (2, arrowed)** in the **Glass Lid (3)** is facing away from the user:



4. Insert the mains plug into the socket.

5. Switch the unit on by pressing the **On/Off Switch** (7) on the left-hand side of the unit to the 'I' position, the **Warm Light** (11) will illuminate as below:



6. Push the **Cook Lever** (13) on the **Control Panel** (10) down to begin cooking – the **Cook Light** (12) will illuminate and the Rice Cooker will begin heating the water.



- i** Do not allow the bowl to run dry during steaming – add water if necessary. See cooking guide table below:

Vegetables steaming guide*

Vegetable	Quantity of Water	Steaming time
Asparagus	¾ Cup	10 Minutes
Broccoli	½ Cup	5 Minutes
Cabbage	1 ¼ Cups	15 Minutes
Carrots	1 ¼ Cups	15 Minutes
Cauliflower	1 ¼ Cups	15 Minutes
Sweetcorn	1 ¼ Cups	15 Minutes
Aubergine	1 – 1 ½ Cups	20 Minutes
Green Beans	1 ¼ Cups	15 Minutes
Spinach	¾ Cup	10 Minutes
Squash	¾ Cup	10 Minutes

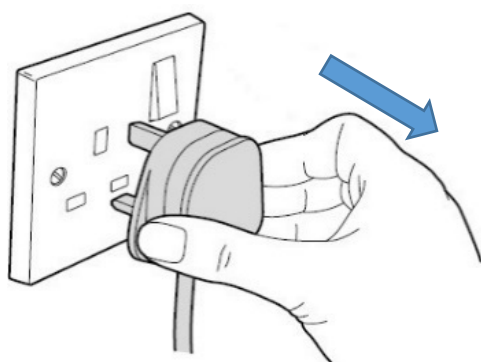
1. *The steaming guide above is for reference only; ensure the food is cooked after steaming.

2. Most vegetables absorb only a small amount of water, there is no need to increase the amount of water with a larger portion of vegetables.
3. Always keep the lid on whilst the food is being steamed. Removing the lid during cooking will cause a loss of steam and heat which will result in a longer cooking time. If it is necessary to raise the lid during cooking, adding a little water will restore the cooking time.

Fish steaming guide*

Fish	Quantity of Water	Steaming time
Sole 10-12oz (275-350g)	¾ Cup	7-8 Minutes
Lemon Sole 10-12oz (275-350g)	¾ Cup	7-8 Minutes
Plaice 10-12oz (275-350g)	¾ Cup	7-8 Minutes
White Fish (Cod, Haddock, Hake, etc.) 6-7oz (175-200g)	½ Cup	8-10 Minutes

1. *The steaming guide above is for reference only; ensure the food is cooked after steaming.
2. Take care not to overcook fish otherwise it will lose consistency.
3. Fish is cooked when it flakes easily and is no longer translucent.
4. Fish will continue to cook for a while after it has been removed from the heat.
5. Always keep the lid on whilst the food is being steamed. Removing the lid during cooking will cause a loss of steam and heat which will result in a longer cooking time. If it is necessary to raise the lid during cooking, adding a little water will restore the cooking time.
6. Once the steaming is complete, the cooker will go into keep warm mode indicating the food is cooked and will be kept warm.
7. After use, switch the unit off by pressing the **On/Off Switch** (7) on the left-hand side of the unit to the 'O' position.
8. Finally, unplug the unit from the mains socket as below:



Cleaning and Maintenance

- Always disconnect the Rice Cooker and Steamer from the mains before cleaning.
- **DO NOT** clean any part of your Rice Cooker and Steamer in a dishwasher.
- Remove bowl, lid and steamer (if used) and wash them in warm soapy water and rinse thoroughly.
- Clean outside of the Rice Cooker and Steamer with a clean damp cloth. Never clean any part of the cooker with harsh or abrasive cleaners.
- Keep the underside of bowl and surface of heater plate free of food, etc. to prevent fouling of the base mechanism.
- **DO NOT** submerge any part of cooker in water or any other liquids.
- To clean the heating plate, remove any large debris by hand then wipe clean with a damp cloth. Allow to dry completely before re-using.
- If the lever is difficult to press down, do not force it, this will occur when the bowl is not fully inserted into the cooker unit or when cooking has completed

Technical Data

Model Number	SDA1061
Rated Voltage	220-240V AC ~ 50-60Hz
Rated Power	700W
Protection Class	I (This Appliance must be Earthed)
Capacity	1.8 Litres

Non-Wireable Mains Plug

If your appliance is supplied with a non-wireable plug fitted to the mains lead and should the fuse need replacing, you must use an ASTA approved one (conforming to BS 1362 of the same rating). If in doubt, consult a qualified electrician who will be pleased to do this for you. If you need to remove the plug – DISCONNECT FROM THE MAINS – and then cut it off the mains lead and immediately dispose of it safely. Never attempt to reuse the plug or insert it into a socket outlet as there is a danger of electric shock.

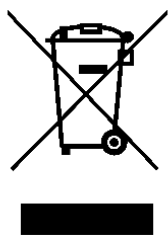
Disposal of the Packaging

Dispose of paper and cardboard in appropriate paper re-cycling facilities.

Dispose of recyclable plastics in appropriate plastic re-cycling facilities.

Dispose of non-recyclable plastics in the appropriate plastics collection service.

Disposal of the Product



You should now recycle your waste electrical goods and in doing so help the environment. This symbol means waste electrical products at the end of their useful life should not be disposed of with normal household waste and not sent to landfill. Please ensure it is taken to a suitable facility for disposal. Check with your Local Authority or retailer for recycling advice or visit www.recycle-more.co.uk, enter your postcode to find out your nearest recycling site.

Customer Support

Should you require any product information, replacement parts or accessories, please contact our customer care team on 0161 831 7879 (9.00am-5.00pm Monday to Thursday, 8.00am-4.00pm Friday) and select option 3 or by contacting us via email: help@daewooelectricals.com.

- Replacement parts and accessories are guaranteed for 1 year from the date of purchase.
- It is important to note that your warranty becomes invalid should non Daewoo parts or accessories be used with this appliance.





DAEWOO®

WARRANTY

Thank you for purchasing your Daewoo product.

As part of our commitment to quality, we are offering you an extra 2 years warranty in addition to your 1 year guarantee

Your Daewoo product is guaranteed for 1 year from the date of original purchase, with proof of purchase or receipt. If any defect should occur due to faulty workmanship or material, your faulty product should be returned to the place of purchase, replacement or refund is at the discretion of the retailer.

The guarantee is subject to the following provisions:

- The product must be correctly installed and operated in accordance with the requirements contained in the instruction manual.
- The product must be used solely for domestic purposes.
- It does not cover general wear and tear, damage, misuse or any consumable parts.
- The guarantee will be rendered invalid if the product is re-sold or has been damaged through inexpert repair.
- The guarantee is only valid within the UK and Eire.

Your standard 1 year guarantee will only be extended to the maximum available for your individual product upon registration. (Note: products must be registered individually and covers the main body and housing). If you do not register your product within 28 days of the original purchase date, your product will only be guaranteed for 1 year.

To validate your extended 2 year warranty* please register your purchase online within 28 days of the original purchase date by registering at <https://help.daewooelectricals.com> or [Contact Us \(daewooelectricals.com\)](https://www.daewooelectricals.com)

**Your extended warranty is only valid with proof of purchase receipt and subject to the conditions outlined above.*

Daewoo is a registered trademark.
Produced and imported under licence by
Eurosonic Group Limited
Brightgate House
1 Brightgate Way
Manchester M32 0TB UK
EU Rep: EuroSonic Magppie (ESM) Ltd. Ireland D05 X006
www.esgltd.com