



**2 PORTION SANDWICH TOASTER**

## READING AND STORING THE USER MANUAL



Before using this product, please read through this manual carefully paying particular attention to the safety instructions. Failure to do so may result in personal injury or damage to the product.


Carefully save this instruction manual for future reference. Ensure the user manual is included when passing the product on to any third parties.

## IMPORTANT SAFETY INSTRUCTIONS FOR PROPER USE

**When using electrical appliances, basic safety precautions should always be followed.**

Only use the product as described in this user manual. Any other use is considered improper and may result in damage to property or persons.

The manufacturer or vendor cannot be held liable for damages or injury incurred through improper or incorrect use.

- **Read and familiarise yourself with all operating instructions before using this Sandwich Maker.**
- Before plugging your unit into the mains, visually check that it is intact and has not suffered any transit damage.
- Check that the voltage indicated on the data plate corresponds with that of the local network before connecting the appliance to the mains power supply.
- Do not use this product with a programmer, timer, separate remote-control system or any other such device.
- Do not immerse this appliance in water or any other liquids.
- Cooking appliances should be positioned in a stable situation with the handles (if applicable) positioned to avoid spillage of liquids.
- **DO NOT** touch hot surfaces. Accessible surfaces are liable to get during use. Always use the handle. 
- Oven gloves should be used whilst using the Sandwich Maker.
- Close supervision is required when using this appliance

near children.

- Never leave this appliance within reach of children.
- This appliance can be used by children aged from 8 years and above and persons with reduced physical, sensory and mental capabilities or lack of experience or knowledge if they have been given supervision or instruction concerning use of the appliance in a safe way and understand the hazards involved.
- Children shall not play with the appliance.
- Keep the appliance and its cord out of reach of children aged less than 8 years.
- Cleaning and user maintenance shall not be made by children unless they are older than 8 and supervised.
- **DO NOT** leave the appliance unattended during use.
- **DO NOT** leave the appliance unattended whilst connected to the mains supply.
- Always use this appliance on a solid, level, non-flammable surface.
- **DO NOT** use this appliance outdoors.
- It is imperative to unplug the power cord after the appliance has been used, before it is cleaned and whilst being repaired.
- Regular, periodic checks should be carried out on the mains cable to ensure no damage is evident. Should there be any signs of damage the appliance should not be used.
- If the power cable is damaged, it should only be replaced by suitable qualified personnel in order to avoid a hazard.
- **DO NOT** operate this appliance with a damaged plug or cord, after a malfunction or after being dropped or damaged in any way.
- **DO NOT** allow the mains cable to hang over sharp edges or come in contact with hot surfaces.
- Allow the unit to cool before storage.
- Never place the appliance near to flammable material or high pressure containers.

- This appliance is intended for household use only and should not be used for industrial purposes.
- **DO NOT** use any accessories or attachments with this appliance other than those supplied or recommended by supplier.
- **DO NOT** immerse the appliance, base or its cord in water or any other liquids.
- **DO NOT** use this appliance for anything other than its intended use.
- **DO NOT** push objects into any openings as damage to the appliance and/or electric shock may occur.
- Ensure appliance is situated in an open area, do not allow it to come in contact with or place beneath cupboards, curtains, wall coverings, clothing or other flammable materials.
- Unplug after each use. Grasp the plug, not the cord.
- **DO NOT** cover this appliance.
- Never place this appliance on an electric, gas, or any other type of hob.
- Repairs to electrical appliances should only be performed by qualified personnel. Improper repairs may place user at serious risk.
- **DO NOT** run the mains cable under carpets, rugs, etc.
- **CAUTION: The outside surface of the Sandwich Maker will get hot during use. Do not attempt to move the unit whilst it is hot.**
- **THIS APPLIANCE MUST BE EARTHED**
- Clean the plates with a clean damp soft cloth – do not use harsh abrasives or chemicals.

## Explanation of Symbols

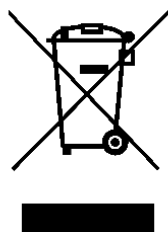
The following warning symbols or words are used in this instruction manual:



Products labelled with UK Conformity Assessment identifies products conforming to UK statutory requirements.



Products labelled with this symbol conform to applicable provisions of the European Economic Area.



You should now recycle your waste electrical goods and in doing so help the environment. This symbol means waste electrical products at the end of their useful life should not be disposed of with normal household waste and not sent to landfill. Please ensure it is taken to a suitable facility for disposal. Check with your Local Authority or retailer for recycling advice or visit [www.recycle-more.co.uk](http://www.recycle-more.co.uk) or [www.weeeireland.ie](http://www.weeeireland.ie) enter your postcode to find out your nearest recycling site.



This designates a hazard with moderate risk, which may result in severe injury if not adhered to.



This symbol provides useful additional information on the use of this product.



This symbol indicates that the supply uses an alternating current mains supply.



This symbol indicates that the surface is gets hot and care must be taken.

## Description of Parts



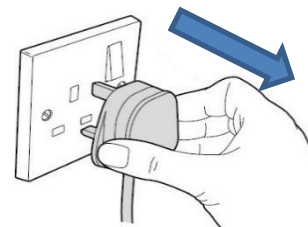
1. Power Indicator
2. Ready Indicator
3. Upper housing
4. Non-stick plate
5. Lower housing
6. Latch

## Before the First Use of Your Sandwich Maker

1. Remove all packing materials and discard responsibly.
2. Clean the plates using a soft, clean damp cloth.
3. To avoid damaging the non-stick coating use a non-metallic kitchen tool made of wood, silicone, etc. to remove the food from cooking plates.

## Setting up Your Sandwich Maker

1. Do not insert the mains plug into the mains socket.
2. Place the Sandwich Maker on a solid, level heat resistant surface at a comfortable height for the user, within reach of a mains socket.
3. Plug the Sandwich Maker into the mains socket.
4. The sandwich maker will pre-heat and the red **Power Indicator (1)** will illuminate to show power is connected and the plates are heating. Lower the **Upper housing (3)** during the heating process. When the unit has reached temperature, the red **Power Indicator (1)** and the green **Ready Indicator (2)** will both illuminate.



### **Cooking (times may vary)**

Place the bread onto the **Non-Stick plate (4)** and add desired filling, then place the second slice of bread over the chosen filling. Lower the **Upper housing (3)** and close using the **Latch (6)** whilst the sandwich cooks.

After 4-5 minutes the sandwich should have cooked, though it is recommended to check the sandwich during cooking.

NB: It is recommended that the bread is buttered on the side facing out to the **Non-Stick plate (4)** to prevent it sticking to the plates.

**⚠ WARNING!** Accessible surfaces are liable to get hot during use. Always use the handle.

### **Care and Maintenance**

- Before carrying out any cleaning or maintenance, ensure that the Sandwich Maker is unplugged from the mains power supply.
- Allow the unit to cool before cleaning.
- Do not submerge any part of the Sandwich maker or mains cable in water or any other liquids.
- Wipe excess oil/grease from the plates, with kitchen roll or similar.
- Wipe clean the outside of the main body and plates with a soft damp cloth.
- Never clean any part of the Sandwich maker with harsh or abrasive cleaners.

### **Hints and Tips**

1. For any meat fillings, it is advisable to use precooked ingredients where possible.
2. It is recommended to butter the outward facing side of the bread to prevent sticking whilst cooking.

### **Non-Rewireable Mains Plug**

If your appliance is supplied with a non-rewireable plug fitted to the mains lead and should the fuse needed replacing, you must use an ASTA approved one (conforming to BS 1362 of the same rating). Never use a plug with the fuse cover missing. If in doubt, consult a qualified electrician.

If you need to remove the plug -**DISCONNECT FROM THE MAINS**- and then cut it off the mains lead and immediately dispose of it safely. Never attempt to reuse the plug or insert it into a socket outlet as there is a danger of electric shock.

### **Technical Specification**

Model No.	SDA1037
Rated Voltage	220-240V~ 50/60Hz
Rated Power	750W
Protection Class	I (This Appliance must be Earthed)
ErP: Power consumption of equipment in off mode shall not exceed 0.50W	0.0W
This equipment complies with Annex III of Commission Regulation (EU) 2023/826	

### **Recycling Information**

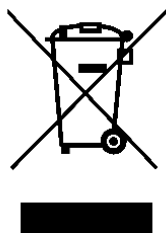
#### **Disposal of the Packaging**

Dispose of paper and cardboard in appropriate paper re-cycling facilities.

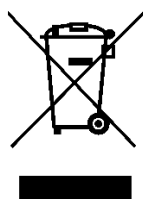
Dispose of recyclable plastics in appropriate plastic re-cycling facilities.

Dispose of non-recyclable plastics in the appropriate plastics collection service.

#### **Disposal of the Product**



You should now recycle your waste electrical goods and in doing so help the environment. This symbol means waste electrical products at the end of their useful life should not be disposed of with normal household waste and not sent to landfill. Please ensure it is taken to a suitable facility for disposal. Check with your Local Authority or retailer for recycling advice or visit [www.recycle-more.co.uk](http://www.recycle-more.co.uk) or [www.weeeireland.ie](http://www.weeeireland.ie) enter your postcode to find out your nearest recycling site.





Daewoo Essentials is a registered trademark.  
Produced and imported under license by  
Eurosonic Group Limited  
Brightgate House  
1 Brightgate Way  
Manchester M32 0TB UK  
EU Rep: EuroSonic Magppie (ESM) Ltd. Ireland D05 X006  
[www.esg ltd.com](http://www.esg ltd.com)