



# 1.5L FILTER COFFEE MAKER

User Manual



\*Please refer to the warranty section for terms of your extended guarantee

## READING AND STORING THE USER MANUAL



Before using this product, please read through this manual carefully paying particular attention to the safety instructions. Failure to do so may result in personal injury or damage to the product.

Carefully save this instruction manual for future reference. Ensure the user manual is included when passing the product on to any third parties.

## **IMPORTANT SAFETY INSTRUCTIONS FOR PROPER USE**

**When using electrical appliances, basic safety precautions should always be followed.**

Only use the product as described in this user manual. Any other use is considered improper and may result in damage to property or persons. The manufacturer or vendor cannot be held liable for damages or injury incurred through improper or incorrect use.

- **Read and familiarise yourself with all operating instructions before using this Coffee Maker.**
- Before plugging your coffee maker into the mains, visually check that it is intact and has not suffered any transit damage.
- Check that the voltage indicated on the data plate corresponds with that of the local network before connecting the appliance to the mains power supply.
- Close supervision is required when using this appliance near children.
- Never leave this appliance within reach of children.
- This appliance can be used by children aged from 8 years and above if they have been given supervision or instruction concerning use if the appliance in a safe way and if they understand the hazards involved. Cleaning and user maintenance shall not be made by children unless they are older than 8 and supervised. Keep the appliance and its cord out of reach of children aged less than 8 years. This appliance can be used by persons with reduced physical, sensory or mental capabilities or lack of experience and knowledge if they have been given

supervision or instruction concerning use of the appliance in a safe way and understand the hazards involved.

Children shall not play with the appliance.

- **DO NOT** leave the appliance unattended during use.
- **DO NOT** leave the appliance unattended whilst connected to the mains supply.
- Always use this appliance on a solid, level, non-flammable surface.
- **DO NOT** use this appliance outdoors.
- It is imperative to unplug the power cord after the appliance has been used, before it is cleaned and whilst being repaired.
- If the supply cord is damaged, it must be replaced by the manufacturer, service agent or similarly qualified person in order to avoid hazard.
- Repairs to electrical appliances should only be performed by qualified personnel. Improper repairs may place user at serious risk.
- **DO NOT** operate this appliance with a damaged plug or cord, after a malfunction or after being dropped or damaged in any way.
- Regular, periodic checks should be carried out on the mains cable to ensure no damage is evident. Should there be any signs of damage the appliance should not be used.
- **DO NOT** allow the mains cable to hang over sharp edges or come in contact with hot surfaces.
- **DO NOT** run the mains cable under carpets, rugs, etc.
- Allow the unit to cool before storage.
- Never place the appliance near to flammable material or high-pressure containers.
- This appliance is intended for household use only and should not be used for industrial purposes.
- **DO NOT** use any accessories or attachments with this appliance other than those supplied or recommended by supplier.

- **DO NOT** immerse the appliance, base or its cord in water or any other liquids.
- **DO NOT** use this appliance for anything other than its intended use.
- **DO NOT** push objects into any openings as damage to the appliance and/or electric shock may occur.
- Ensure appliance is situated in an open area, do not allow it to come in contact with cupboards, curtains, wall coverings, clothing or other flammable materials.
- Unplug after each use. Grasp the plug, not the cord.
- **DO NOT** cover this appliance.
- Never place this appliance on an electric, gas, or any other type of hob.
- **WARNING: DO NOT remove the Filter Basket or Funnel whilst the water is boiling.**
- Never fill the coffee maker more than its capacity – ensure the water level is between the min and max marks on the water tank. If the coffee maker is overfilled, boiling water may be ejected.
- Always close the Top lid during use and do not open the lid or remove the filter basket whilst the water is boiling.
- **CAUTION: The outside surface of the coffee maker will get hot during use.**

**THIS APPLIANCE MUST BE EARTHED**

## **ADDITIONAL SAFETY INFORMATION**

- **This appliance is intended for use in domestic households only, it must not be used for commercial use.**
- **Ensure the Top lid and the lid of the Glass Carafe is closed before starting the brewing process.**
- **Do not cover the coffee maker.**
- **Allow the coffee maker to cool fully before storing.**
- **The surfaces of the top lid will become hot during use. Do not touch.**
- **Ensure that the coffee maker is used in an open, well-ventilated area well away from other appliances and not near or under surfaces that are heat sensitive or those that may be damaged by steam.**
- **Only use this coffee maker with the accessories provided. This appliance can cause personal injury if misused.**
- **DO NOT place anything on top of the appliance.**
- **Ensure that the water level in the water tank does not exceed the MAX mark whilst filling and that it does not drop below the MIN mark during use.**
- **Leave the empty glass carafe on the heating/keep warm plate, as it may be prone to cracking.**

### Explanation of Symbols

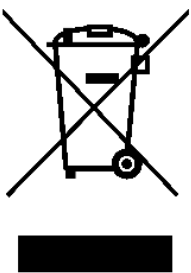
The following warning symbols or words are used in this instruction manual:



Products labelled with UK Conformity Assessment identifies products conforming to UK statutory requirements.



Products labelled with this symbol conform to applicable provisions of the European Economic Area.



You should now recycle your waste electrical goods and in doing so help the environment. This symbol means waste electrical products at the end of their useful life should not be disposed of with normal household waste and not sent to landfill. Please ensure it is taken to a suitable facility for disposal. Check with your Local Authority or retailer for recycling advice or visit [www.recycle-more.co.uk](http://www.recycle-more.co.uk) or [www.weeireland.ie](http://www.weeireland.ie), enter your postcode to find out your nearest recycling site.



This symbol provides useful additional information on the use of this product.



This symbol indicates that the supply uses an alternating current mains supply.

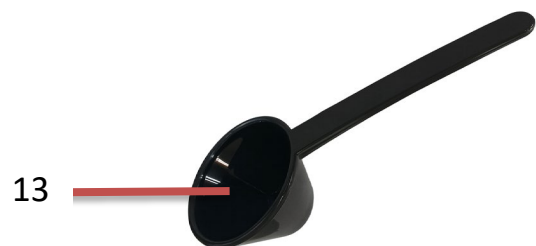
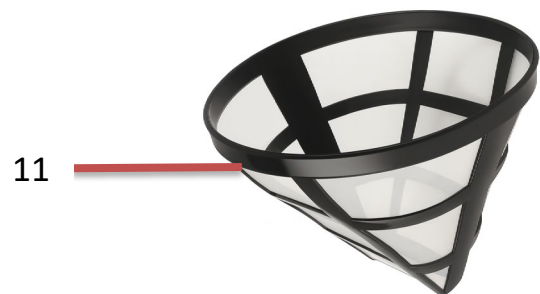


This designates a hazard with moderate risk, which may result in severe injury or damage to the product if not adhered to.

## Description of Parts



1. Top Lid
2. Water tank
3. Coffee Machine main unit
4. Power Button
5. Heating/keep warm plate
6. Max. fill line
7. Water tank gauge
8. Min. fill line
9. Carafe handle
10. Glass Carafe
11. Filter Basket
12. Funnel
13. Measuring spoon



### **Before first Use of Your Drip Coffee Maker**

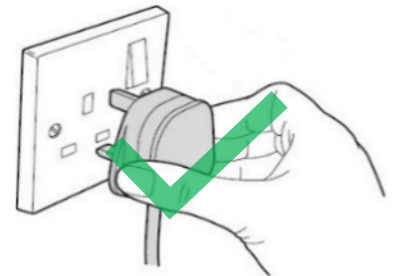
Please read these operating instructions thoroughly and keep them in a safe place for future reference.

- Remove all packing materials and discard responsibly.
- Clean housing of the Drip Coffee Maker with a clean, soft damp cloth and dry thoroughly.
- Wash the **Glass carafe** (10), **Funnel** (12) and **Filter basket** (11) in warm soapy water and dry thoroughly afterwards.
- Never clean with harsh or abrasive cleaners.
- Do not submerge the appliance in water or any other liquids.
- Do not clean any part of your Drip Coffee Maker in a dishwasher.
- The coffee maker should be used first with water only. Discard the water from the glass carafe when the brewing process has been completed.

**IMPORTANT** in hard water areas it is highly recommended to use demineralised or filtered water to avoid calcium build up which will prolong the life and prevent damage to the Drip Coffee Maker.

### **Using Your Drip Coffee Maker**

1. Place the Drip Coffee Maker on a solid, level, heat resistant surface clear of all obstructions as described above.
2. Insert the Mains plug into the nearest socket.



### **Filling the Water Tank (3)**

1. Lift open the **Top Lid** (1) of the drip coffee maker.
2. Using a suitable measuring jug, fill the **Water tank** (2) with cold water, ensuring that the water level is above the **Minimum fill line** (8) and below the **Maximum fill line** (6).



### *Making Coffee*

1. Remove the **Filter Basket (11)** from the **Funnel (12)**.
2. Add the desired amount of ground coffee to the **Filter Basket (11)** using the **Measuring Spoon (13)** provided. The amount of ground coffee will vary according to personal taste and the coffee manufacturers recommendation.
3. Gently shake the **Filter Basket (11)** to evenly distribute the coffee.
4. Place the **Filter Basket (11)** back into the **Funnel (12)** securing it in place and close the **Top Lid (1)**.
5. Insert the **Glass Carafe (10)** onto the **Heating/Keep Warm plate (5)**, ensuring that the centre line of **Glass Carafe (10)** aligns with that of the **Funnel (12)**.
6. Press the **Power Button (4)**, the indicator light will illuminate red to indicate the coffee maker is on and the brewing process has commenced.
7. Once all the coffee has drained into the **Glass Carafe (10)** and the brewing cycle has completed, the indicator light will remain on and the coffee maker will automatically activate the keep warm function for approximately 30 minutes.
8. Alternatively, switch off the coffee maker by pressing the **Power Button (4)**.
9. Remove the **Glass Carafe (10)** from the **Heating/Keep Warm Plate (5)** and serve. Handle with care, as the **Glass Carafe (10)** will become hot during operation.



**NB:** To interrupt or stop the brewing cycle, remove the **Glass Carafe (10)** from the **Heating/Keep Warm Plate (5)**, press the **Power Button (4)** or switch off the coffee maker at the mains power supply and unplug it. Brew time with maximum water is approximately 8 minutes.

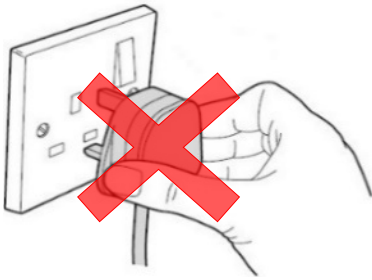
**⚠ WARNING!** Allow the coffee maker to completely cool before preparing a second coffee. If the coffee maker does not fully cool before reuse, water in the water tank may overheat. This will allow hot steam to escape, which could injure the user.

### Anti-drip Feature

The coffee maker is equipped with an anti-drip feature to prevent coffee from leaking out from the **Funnel (12)** when the **Glass Carafe (10)** is removed from the **Heating/Keep Warm Plate (5)** during the brewing process.

**⚠️ WARNING!** Replace the **Glass Carafe (10)** within 30 seconds of removing it from the **Heating/Keep Warm Plate (5)** during brewing to prevent coffee from leaking from the **Funnel (12)**.

### Cleaning and Maintenance



- Always unplug the Coffee Maker from the mains supply and allow it to cool before cleaning.
  - Do not immerse the Coffee Maker in water or any other liquids.
  - Wipe the body of the Coffee Maker clean with a clean damp cloth.
  - Do not use harsh or abrasive, powders or cleaners.
- Do not clean any part of the Coffee Maker in a dishwasher.
  - Remove the **Filter Basket (11)** and remove the **Funnel (12)**. Wash both clean in hot water and dry thoroughly.
  - Wash the **Glass Carafe (10)** in warm soapy water, rinse and dry thoroughly. The **Glass Carafe (10)** is not dishwasher safe.

### Removing Mineral (Calcium) deposits

1. It is recommended to descale the coffee maker regularly, at least once every 2-3 months, especially if used in a hard water area. Frequent descaling will improve the performance and lifespan of the coffee maker.
2. Pour water and descaling agent into the **Water Tank (2)** up to the **Maximum fill line (6)**. Water and descaling agent ratio is 4:1 or follow the instructions with the descaling agent). Citric acid can also be used instead of the descaling agent in a water and citric acid ratio of 100:3.
3. Insert the **Glass Carafe (10)** onto the **Heating/Keep Warm Plate (5)**. Ensure the **Funnel (12)** is in place.
4. Press the **Power Button (4)** and begin the brewing process until it has cycled one cup of water. Turn off the coffee maker off and leave it to soak for approximately 15 minutes.
5. Turn on the coffee maker again by pressing the **Power Button (4)**. Repeat until all the water has been cycled.
6. Discard the water from the **Glass Carafe (10)**.
7. Refill the **Water Tank (2)** to the **Maximum fill line (8)** with clean water and run the coffee maker 3 more times. The coffee maker should now be descaled, clean, and ready for use.

### ***Troubleshooting***

<b><i>Problem</i></b>	<b><i>Possible Cause</i></b>	<b><i>Possible Solution</i></b>
Little or no coffee is coming out	Water tank is empty	Fill the water tank
	Coffee maker is blocked with Calcium deposits	See Removing Mineral (Calcium) deposits.
Coffee comes out too slow or not at all	Ground coffee is too fine, and the Filter Basket is clogged	Clean the Filter Basket, dry and put fresh coffee ground in.
Coffee leakage when Glass Carafe is removed	The Glass carafe has been removed from the Heating/Keep warm plate for more than 30 seconds whilst in operation	Replace the Glass Carafe onto the Heating/Keep warm plate within 30 seconds.

### ***Technical Specification***

Rated Voltage	220-240V~ 50-60Hz
Rated Power	900W
Model Number	SDA2930
Protection Class	I (This Appliance Must Be Earthed)
Power consumption of equipment in Off Mode shall not exceed 0,50W	0,41W
This Equipment complies with Annex III of the Commission Regulation (EU) 2023/826	

### ***Non-Rewireable Mains Plug***

If your appliance is supplied with a non-rewireable plug fitted to the mains lead and should the fuse needed replacing, you must use an ASTA approved one (conforming to BS 1362 of the same rating). Never use a plug with the fuse cover missing. If in doubt, consult a qualified electrician.

If you need to remove the plug -**DISCONNECT FROM THE MAINS**- and then cut it off the mains lead and immediately dispose of it safely. Never attempt to reuse the plug or insert it into a socket outlet as there is a danger of electric shock.

## **Recycling Information**

### **Disposal of the Packaging**

Dispose of paper and cardboard in appropriate paper re-cycling facilities.

Dispose of recyclable plastics in appropriate plastic re-cycling facilities.

Dispose of non-recyclable plastics in the appropriate plastics collection service.

### **Disposal of the Product**



You should now recycle your waste electrical goods and in doing so help the environment. This symbol means waste electrical products at the end of their useful life should not be disposed of with normal household waste and sent to landfill. Please ensure it is taken to a suitable facility for disposal. Check with your Local Authority or retailer for recycling advice or visit [www.recycle-more.co.uk](http://www.recycle-more.co.uk) or [www.weeeireland.ie](http://www.weeeireland.ie), enter your postcode to find out your nearest recycling site.

Safety Marks



---

**Notes**

### ***Customer Support***

Should you require any product information, replacement parts or accessories, please contact our customer care team on 0161 831 7879 (8.30am-4.30pm Monday to Thursday, 8.00am-4.00pm Friday) and select option 3 or by contacting us via email: [help@daewooelectricals.com](mailto:help@daewooelectricals.com).

- Replacement parts and accessories are guaranteed for 1 year from the date of purchase.
- It is important to note that your warranty becomes invalid should non Daewoo parts or accessories be used with this appliance.



# DAEWOO®

## WARRANTY

*Thank you for purchasing your Daewoo product.*

*As part of our commitment to quality, we are offering you an extra 2 years warranty in addition to your 1 year guarantee*

Your Daewoo product is guaranteed for 1 year from the date of original purchase, with proof of purchase or receipt. If any defect should occur due to faulty workmanship or material, your faulty product should be returned to the place of purchase, replacement or refund is at the discretion of the retailer.

The guarantee is subject to the following provisions:

- The product must be correctly installed and operated in accordance with the requirements contained in the instruction manual.
- The product must be used solely for domestic purposes.
- It does not cover general wear and tear, damage, misuse or any consumable parts.
- The guarantee will be rendered invalid if the product is re-sold or has been damaged through inexpert repair.
- The guarantee is only valid within the UK and Eire.

Your standard 1 year guarantee will only be extended to the maximum available for your individual product upon registration. (Note: products must be registered individually and covers the main body and housing). If you do not register your product within 28 days of the original purchase date, your product will only be guaranteed for 1 year.

***To validate your extended 2 year warranty\*please register your purchase online within 28 days of the original purchase date by registering at:***

***<https://help.daewooelectricals.com>***

***or***

***[Contact Us \(daewooelectricals.com\)](https://www.daewooelectricals.com)***

\*Your extended warranty is only valid with proof of purchase receipt and subject to the conditions outlined above.

Daewoo is a registered trademark.  
Produced and imported under licence by  
Eurosonic Group Limited  
Brightgate House  
1 Brightgate Way  
Manchester M32 0TB UK  
EU Rep: EuroSonic Magppie (ESM) Ltd. Ireland D05 X006  
[www.esgltd.com](http://www.esgltd.com)