



\*Please refer to the warranty section for terms of your extended guarantee

# DESKTOP BLADELESS FAN



INCLUDES REMOTE CONTROL



---

## READING AND STORING THE USER MANUAL



Before using this product, please read through this manual carefully paying particular attention to the safety instructions. Failure to do so may result in personal injury or damage to the product.

Carefully save this instruction manual for future reference. Ensure the user manual is included when passing the product on to any third parties.

Only use the product as described in this user manual. Any other use is considered improper and may result in damage to property or persons. The manufacturer or vendor cannot be held liable for damages or injury incurred through improper or incorrect use.

- **Read and familiarise yourself with all operating instructions before using this Bladeless Fan.**
- Before plugging your unit into the mains, visually check that the unit is intact and has not suffered any transit damage.
- **DO NOT** use this product with a programmer, timer, separate remote control system or any other device.
- Check that the voltage indicated on the data plate corresponds with that of the local network before connecting the appliance to the mains power supply.
- This appliance can be used by children aged from 8 years and above and persons with reduced physical sensory or mental capabilities or lack of experience and knowledge if they have been given supervision or instruction concerning use of the appliance in a safe way and understand the hazards involved. Children shall not play with the appliance. Cleaning and user maintenance shall not be made by children without supervision.
- Close supervision is required when using this appliance near children.
- Never leave this appliance within reach of children.

- Children of less than 3 years should be kept away unless continuously supervised.
- **DO NOT** immerse the appliance or its cord in water or any other liquids.
- **DO NOT** leave the appliance unattended during use.
- **DO NOT** leave the appliance unattended whilst connected to the mains supply.
- Always use this appliance on solid, level, surface.
- **DO NOT** use this appliance outdoors.
- **DO NOT** use any accessories or attachments with this appliance other than those supplied or recommended by the supplier.
- It is imperative to unplug the power cord after the appliance has been used, before it is cleaned and whilst being repaired.
- Repairs to electrical appliances should be performed by qualified personnel. Improper repairs may place user at serious risk.
- **DO NOT** operate this appliance with a damaged plug or cord, after a malfunction or after being dropped or damaged in any way.
- Regular, periodic checks should be carried out on the mains cable to ensure no damage is evident. Should there be any signs of damage the appliance should not be used.
- If the power cable is damaged, it should only be replaced by suitably qualified personnel in order to avoid a hazard.
- **DO NOT** allow the mains cable to hang over sharp edges or come into contact with hot surfaces.
- **DO NOT** run the mains cable under carpets, rugs etc.
- This appliance is intended for household use only and should not be used for industrial purposes.

- **DO NOT** use this appliance for anything other than intended use.
- **DO NOT** push objects (including fingers) into the fan grill or any openings as this could risk injury or damage to the appliance.
- Unplug after each use. Grasp the plug not the cord.

### Explanation of Symbols

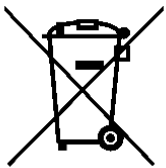
The following warning symbols or words are used in this instruction manual:



Products labelled with UK Conformity Assessment identifies products conforming to UK statutory requirements.



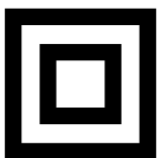
Products labelled with this symbol conform to applicable provisions of the European Economic Area.



Waste batteries should not be disposed of with household waste. Please recycle where facilities exist. Check with your Local Authority or retailer for recycling advice or visit [www.recycle-more.co.uk](http://www.recycle-more.co.uk) or [www.weeeireland.ie](http://www.weeeireland.ie) enter your postcode to find out your nearest recycling site.



You should now recycle your waste electrical goods and in doing so help the environment. This symbol means waste electrical products at the end of their useful life should not be disposed of with normal household waste and not sent to landfill. Please ensure it is taken to a suitable facility for disposal. Check with your Local Authority or retailer for recycling advice or visit [www.recycle-more.co.uk](http://www.recycle-more.co.uk) or [www.weeeireland.ie](http://www.weeeireland.ie) and enter your postcode to find out your nearest recycling site.



This Class 2 symbol indicates that the product is electrically double insulated and does not require an earth connection.



This symbol provides useful additional information on the use of this product.

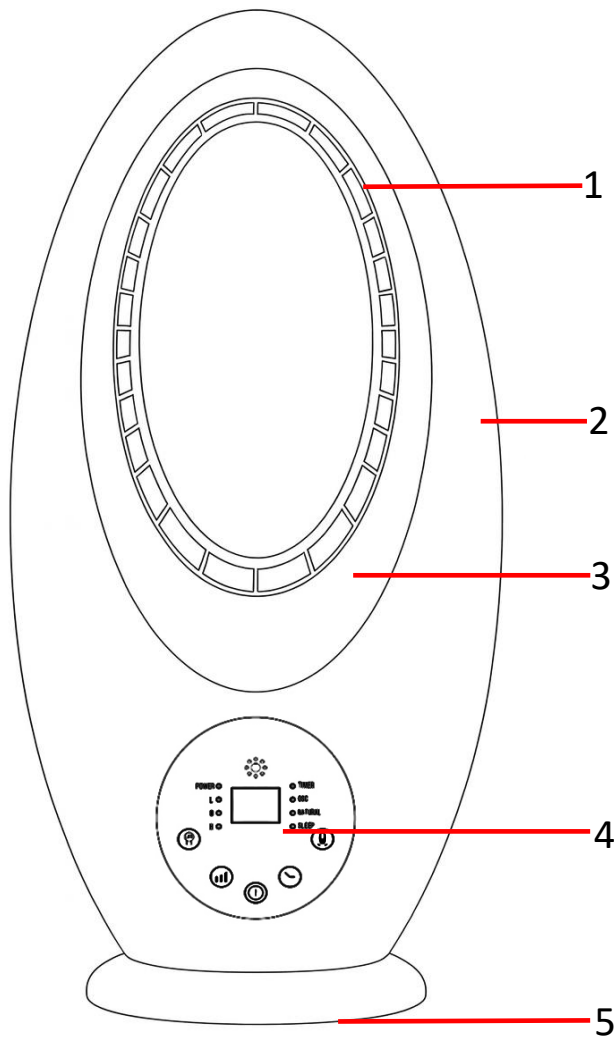


This symbol indicates that the supply uses an alternating current mains supply.

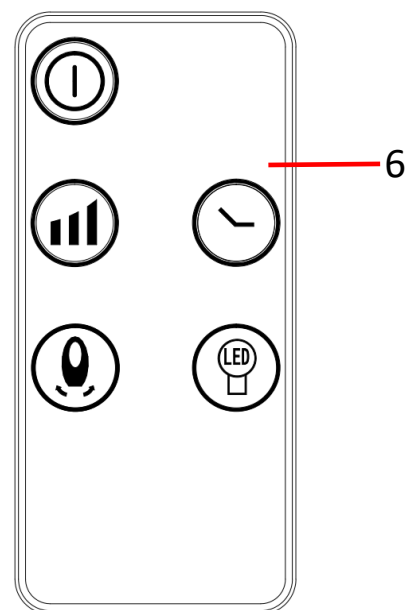


This symbol designates a hazard with moderate risk, which may result in severe injury if not adhered to.

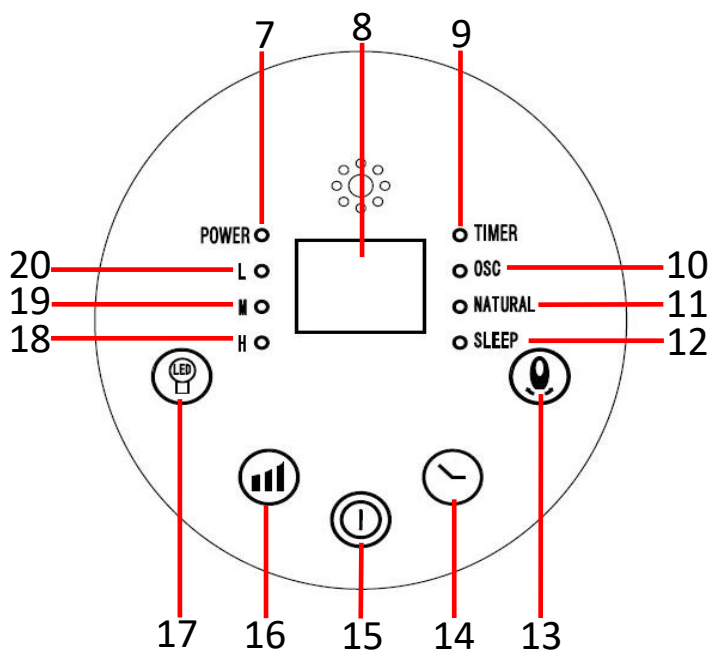
## Description of Parts



1. Air Outlet
2. Main Body
3. Light
4. Control Panel
5. Base
6. Remote Control



## Description of Control Panel (4)



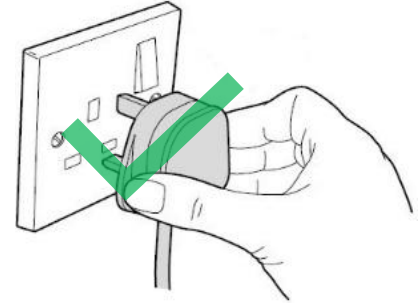
7. Power Indicator
8. LED Display
9. Timer Indicator
10. Oscillate Mode Indicator
11. Natural Mode Indicator
12. Sleep Mode Indicator
13. Oscillate Button
14. Timer Button
15. Power On/Off Button
16. Fan Speed/Mode Button
17. Light Button
18. High Fan Speed Indicator
19. Medium Fan Speed Indicator
20. Low Fan Speed Indicator

### Before first Use of Your Bladeless Fan


Remove all packing materials and discard responsibly.  
Ensure that all parts are present – see **Description of Parts** above.  
Check that there is no damage to the mains cable or product.

### Operating Instructions

- Place the fan on a solid, dry and level surface.
- Insert the Mains Plug into the nearest socket.
- The **Power Indicator** (7) will illuminate to show the unit is connected to the mains.




- Touch the **Power On/Off Button** (15)  to power up the fan.
- Touch the **Fan Speed/Mode Button** (16)  to select the following:

Touch 	Speed/Mode	Indicator
First	Low Fan Speed	(20)
Second	Medium Fan Speed	(19)
Third	High Fan Speed	(18)
Fourth	Natural Mode*	(11)
Fifth	Sleep Mode**	(12)


\*Natural Mode is varying wind, like that found outdoors.

\*\*Sleep Mode is like Nature Mode but quieter for sleeping.

### Oscillation


- To make the fan oscillate from side to side, touch the **Oscillate Button** (13)  on the **Control Panel** (4). The **Oscillate Indicator** (10) will light when the oscillate mode is selected.
- To turn off the oscillation, touch the **Oscillate Button** (13) again.

### Switching off

- Touch the **Power On/Off Button** (15)  on the **Control Panel** (4) to switch the fan off back into standby.
- **NB** remove the plug from the socket and disconnect from the mains if the fan is not to be used for a while.

### Using the Timer

*The timer can be set in 1 hour increments up to 12 hours as follows:*

- Touch the **Timer Button** (14)  to set how long the fan will be on for.
- Each touch of the **Timer Button** (14) will advance the timer by 1 hour. The total time set will be shown by the **LED Display** (8).

### Using the Light (3)

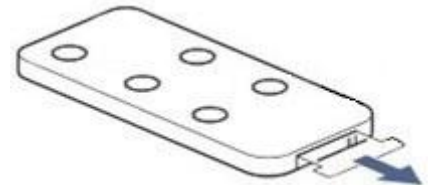
Touch the **Light Button (17)** to select from the following light modes: White, Green, Purple, Blue and Off.

**NB** the **Light (3)** can be used independently to the fan.

### Using the Remote Control (6)

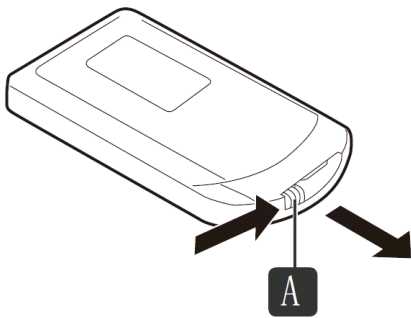
The **Remote Control (6)** duplicates the controls on the **Control Panel (4)** allowing you to control your fan remotely.

**i** If using the **Remote Control (6)** for the first time, pull the tab from the battery compartment as shown right:

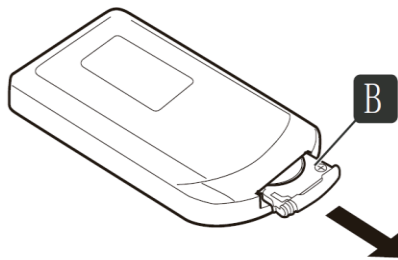


### Replacing the Battery in the Remote Control

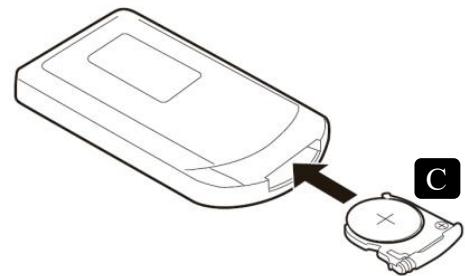
If the Remote-Control range has become reduced or it has stopped working altogether the battery will need replacing as shown below:



**A** Push the tab on the battery compartment to the right in the direction of the arrow as shown above.



**B** Slide out the battery compartment and insert a new CR2025 battery ensuring the positive polarity marking is uppermost.



**C** Slide the battery compartment back into the Remote Control.

- **CAUTION:** There is a danger of explosion if the battery is incorrectly fitted.
- Ensure that the battery is installed with the correct polarity.
- It is recommended that the battery is removed if the remote is not to be used for a long period of time or if the remote is to be disposed of.
- Replace only with the same or equivalent battery type.
- Store batteries in a cool dry place.
- Do not expose the battery to sunshine, fire, heat or similar, never dispose of batteries in a fire.
- Do not charge non-rechargeable batteries.
- Do not short-circuit batteries.
- Exhausted batteries are to be removed from the product and safely disposed of.

**WARNING!**

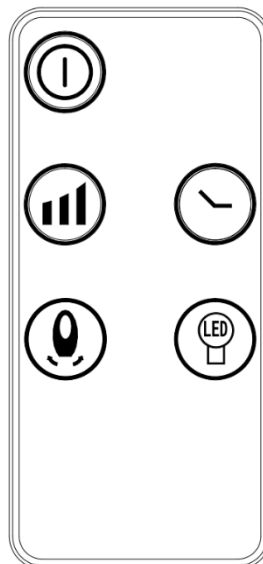
- Do not ingest the battery, Chemical Burn Hazard.
- The remote control supplied with this product contains a coin/button cell type battery.
- If the coin/button cell type battery is swallowed, it can cause severe internal burns in just 2 hours and can lead to death.
- Keep new and used batteries away from children.
- If the battery compartment does not close securely, stop using the product and keep away from children.
- If you think batteries may have been swallowed or placed inside any part of the body, seek immediate medical attention.

**Description of Parts – The Remote Control (6)**

ON/OFF – press to power up and power down the fan.

SPEED – press to select – High, Middle or Low speeds, Natural or Sleep Modes.

OSCILLATION – press to select oscillation mode.

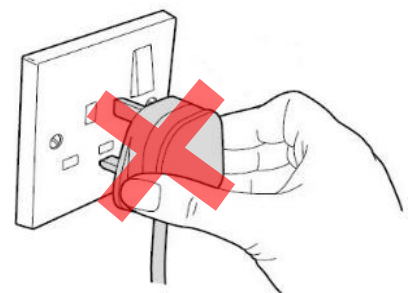


TIMER – press to set the timer.

LIGHT – press to select from Off, White, Green, Purple or Blue light.

**Care and Use of Your Fan**

- Ensure that the fan is not connected to the mains supply before cleaning.
- Wipe the fan body clean with a clean, soft damp cloth.
- Do not use harsh or abrasive chemicals.
- Do not immerse the fan or its cord in water or any other liquid.



### **Non-Rewireable Mains Plug**

If your appliance is supplied with a non-rewireable plug fitted to the mains lead and should the fuse needed replacing, you must use an ASTA approved one (conforming to BS 1362 of the same rating). Never use a plug with the fuse cover missing. If in doubt, consult a qualified electrician.

If you need to remove the plug-**DISCONNECT FROM THE MAINS**- and then cut it off the mains lead and immediately dispose of it safely. Never attempt to reuse the plug or insert it into a socket outlet as there is a danger of electric shock.

### **Technical Specification**

Model Number	COL1639
Rated Voltage	220-240V~ 50/60Hz
Rated Power	55W
Air Volume	50m <sup>3</sup> /hr
Net Weight	2.9kg
Dimensions	59cm(H) x 28.5cm(W) x 18.7cm(D)
Protection Class	II

### **Recycling Information**

#### **Disposal of the Packaging**

Dispose of paper and cardboard in appropriate paper re-cycling facilities.

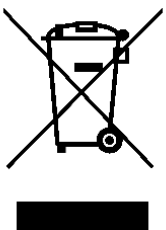
Dispose of recyclable plastics in appropriate plastic re-cycling facilities.

Dispose of non-recyclable plastics in the appropriate plastics collection service

#### **Disposal of the Product**



Waste batteries should not be disposed of with household waste. Please recycle where facilities exist. Check with your Local Authority or retailer for recycling advice or visit [www.recycle-more.co.uk](http://www.recycle-more.co.uk) or [www.weeeireland.ie](http://www.weeeireland.ie) enter your postcode to find out your nearest recycling site.

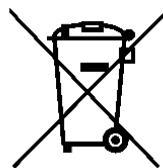
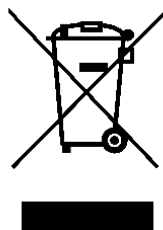


You should now recycle your waste electrical goods and in doing so help the environment. This symbol means waste electrical products at the end of their useful life should not be disposed of with normal household waste and not sent to landfill. Please ensure it is taken to a suitable facility for disposal. Check with your Local Authority or retailer for recycling advice or visit [www.recycle-more.co.uk](http://www.recycle-more.co.uk) or [www.weeeireland.ie](http://www.weeeireland.ie) enter your postcode to find out your nearest recycling site.

### ***Customer Support***

Should you require any product information, replacement parts or accessories, please contact our customer care team on 0161 831 7879 (8.30am-4.30pm Monday to Thursday, 8.00am-4.00pm Friday) and select option 3 or by contacting us via email: [help@daewooelectricals.com](mailto:help@daewooelectricals.com).

- Replacement parts and accessories are guaranteed for 1 year from the date of purchase.
- It is important to note that your warranty becomes invalid should non Daewoo parts or accessories be used with this appliance.

**UK  
CA**



# DAEWOO®

## WARRANTY

*Thank you for purchasing your Daewoo product.*

*As part of our commitment to quality, we are offering you an extra 2 years warranty in addition to your 1 year guarantee*

Your Daewoo product is guaranteed for 1 year from the date of original purchase, with proof of purchase or receipt. If any defect should occur due to faulty workmanship or material, your faulty product should be returned to the place of purchase, replacement or refund is at the discretion of the retailer.

The guarantee is subject to the following provisions:

- The product must be correctly installed and operated in accordance with the requirements contained in the instruction manual.
- The product must be used solely for domestic purposes.
- It does not cover general wear and tear, damage, misuse or any consumable parts.
- The guarantee will be rendered invalid if the product is re-sold or has been damaged through inexpert repair.
- The guarantee is only valid within the UK and Eire.

Your standard 1 year guarantee will only be extended to the maximum available for your individual product upon registration. (Note: products must be registered individually and covers the main body and housing). If you do not register your product within 28 days of the original purchase date, your product will only be guaranteed for 1 year.

*To validate your extended 2 year warranty\* please register your purchase online within 28 days of the original purchase date by registering at:*

<https://help.daewooelectricals.com>

or

[Contact Us \(daewooelectricals.com\)](https://www.daewooelectricals.com)

\*Your extended warranty is only valid with proof of purchase receipt and subject to the conditions outlined above.

Daewoo® is a registered trademark.  
Produced and imported under licence by  
Eurosonic Group Limited  
Brightgate House  
1 Brightgate Way  
Manchester M32 0TB UK  
EU Rep: EuroSonic Magppie (ESM) Ltd. Ireland D05 X006  
[www.esgltd.com](http://www.esgltd.com)  
Made in China